

# ENO2 antibody - middle region

Rabbit Polyclonal Antibody  
Catalog # AI14564

## Product Information

---

<b>Application</b>	WB
<b>Primary Accession</b>	<a href="#">P09104</a>
<b>Other Accession</b>	<a href="#">NM_001975</a> , <a href="#">NP_001966</a>
<b>Reactivity</b>	Human, Mouse, Rat, Rabbit, Zebrafish, Goat, Dog, Guinea Pig, Horse, Bovine, Sheep
<b>Predicted Host</b>	Human, Mouse, Rabbit, Zebrafish, Chicken, Guinea Pig, Horse, Bovine
<b>Clonality</b>	Rabbit
<b>Calculated MW</b>	Polyclonal 47269

## Additional Information

---

<b>Gene ID</b>	2026
<b>Alias Symbol</b>	NSE
<b>Other Names</b>	Gamma-enolase, 4.2.1.11, 2-phospho-D-glycerate hydro-lyase, Enolase 2, Neural enolase, Neuron-specific enolase, NSE, ENO2
<b>Format</b>	Liquid. Purified antibody supplied in 1x PBS buffer with 0.09% (w/v) sodium azide and 2% sucrose.
<b>Reconstitution &amp; Storage</b>	Add 50 ul of distilled water. Final anti-ENO2 antibody concentration is 1 mg/ml in PBS buffer with 2% sucrose. For longer periods of storage, store at 20°C. Avoid repeat freeze-thaw cycles.
<b>Precautions</b>	ENO2 antibody - middle region is for research use only and not for use in diagnostic or therapeutic procedures.

## Protein Information

---

<b>Name</b>	ENO2
<b>Function</b>	Has neurotrophic and neuroprotective properties on a broad spectrum of central nervous system (CNS) neurons. Binds, in a calcium- dependent manner, to cultured neocortical neurons and promotes cell survival (By similarity).
<b>Cellular Location</b>	Cytoplasm. Cell membrane. Note=Can translocate to the plasma membrane in either the homodimeric (alpha/alpha) or heterodimeric (alpha/gamma) form

## Tissue Location

The alpha/alpha homodimer is expressed in embryo and in most adult tissues. The alpha/beta heterodimer and the beta/beta homodimer are found in striated muscle, and the alpha/gamma heterodimer and the gamma/gamma homodimer in neurons

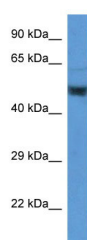
## References

---

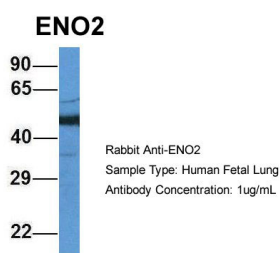
McAleese S.M.,et al.Eur. J. Biochem. 178:413-417(1988).  
van Obberghen E.,et al.J. Neurosci. Res. 19:450-456(1988).  
Oliva D.,et al.Gene 79:355-360(1989).  
Oliva D.,et al.Genomics 10:157-165(1991).  
Ansari-Lari M.A.,et al.Genome Res. 7:268-280(1997).

## Images

---



WB Suggested Anti-ENO2 Antibody Titration: 1.0 µg/ml  
Positive Control: Placenta



Host:Rabbit  
Target Name:ENO2  
Sample Tissue:Human Fetal Lung  
Antibody Dilution: 1.0µg/ml

Please note: All products are 'FOR RESEARCH USE ONLY. NOT FOR USE IN DIAGNOSTIC OR THERAPEUTIC PROCEDURES'.