

# BCAM antibody - C-terminal region

Rabbit Polyclonal Antibody  
Catalog # AI14504

## Product Information

---

<b>Application</b>	WB
<b>Primary Accession</b>	<a href="#">P50895</a>
<b>Other Accession</b>	<a href="#">NM_005581</a> , <a href="#">NP_005572</a>
<b>Reactivity</b>	Human, Mouse, Rat, Rabbit, Pig, Dog, Horse, Bovine
<b>Predicted</b>	Human, Mouse, Rat, Rabbit, Dog, Horse, Bovine
<b>Host</b>	Rabbit
<b>Clonality</b>	Polyclonal
<b>Calculated MW</b>	67405

## Additional Information

---

<b>Gene ID</b>	4059
<b>Alias Symbol</b>	AU, CD239, LU, MSK19
<b>Other Names</b>	Basal cell adhesion molecule, Auberge B antigen, B-CAM cell surface glycoprotein, F8/G253 antigen, Lutheran antigen, Lutheran blood group glycoprotein, CD239, BCAM, LU, MSK19
<b>Format</b>	Liquid. Purified antibody supplied in 1x PBS buffer with 0.09% (w/v) sodium azide and 2% sucrose.
<b>Reconstitution &amp; Storage</b>	Add 50 ul of distilled water. Final anti-BCAM antibody concentration is 1 mg/ml in PBS buffer with 2% sucrose. For longer periods of storage, store at 20°C. Avoid repeat freeze-thaw cycles.
<b>Precautions</b>	BCAM antibody - C-terminal region is for research use only and not for use in diagnostic or therapeutic procedures.

## Protein Information

---

<b>Name</b>	BCAM
<b>Synonyms</b>	LU, MSK19
<b>Function</b>	Transmembrane glycoprotein that functions as both a receptor and an adhesion molecule playing a crucial role in cell adhesion, motility, migration and invasion (PubMed: <a href="#">9616226</a> , PubMed: <a href="#">31413112</a> ). Extracellular domain enables binding to extracellular matrix proteins, such as laminin, integrin and other ligands while its intracellular domain interacts with cytoskeletal proteins like hemoglobin, facilitating cell signal transduction (PubMed: <a href="#">17158232</a> ). Serves as a receptor for laminin alpha-5/LAMA5 to promote cell adhesion

(PubMed:[15975931](#)). Mechanistically, JAK2 induces BCAM phosphorylation and activates its adhesion to laminin by stimulating a Rap1/AKT signaling pathway in the absence of EPOR (PubMed:[23160466](#)).

**Cellular Location**

Cell membrane; Single-pass type I membrane protein

**Tissue Location**

Wide tissue distribution (highest in the pancreas and very low in brain). Closely associated with the basal layer of cells in epithelia and the endothelium of blood vessel walls

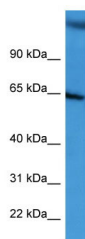
**References**

---

Parsons S.F.,et al.Proc. Natl. Acad. Sci. U.S.A. 92:5496-5500(1995).  
Grimwood J.,et al.Nature 428:529-535(2004).  
Mural R.J.,et al.Submitted (JUL-2005) to the EMBL/GenBank/DDBJ databases.  
Campbell I.G.,et al.Cancer Res. 54:5761-5765(1994).  
Wang C.,et al.Submitted (NOV-2007) to the EMBL/GenBank/DDBJ databases.

**Images**

---



WB Suggested Anti-BCAM Antibody Titration: 0.2-1 µg/ml  
ELISA Titer: 1:312500  
Positive Control: HepG2 cell lysate  
BCAM is strongly supported by BioGPS gene expression data to be expressed in Human HepG2 cells

Please note: All products are 'FOR RESEARCH USE ONLY. NOT FOR USE IN DIAGNOSTIC OR THERAPEUTIC PROCEDURES'.