

CNTFR antibody - C-terminal region

Rabbit Polyclonal Antibody

Catalog # AI14485

Product Information

Application	WB
Primary Accession	P26992
Other Accession	NM_001842 , NP_001833
Reactivity	Human, Mouse, Rat, Rabbit, Pig, Dog, Guinea Pig, Horse, Bovine, Sheep
Predicted	Human, Mouse, Rat, Rabbit, Dog, Guinea Pig, Horse, Bovine
Host	Rabbit
Clonality	Polyclonal
Calculated MW	40633

Additional Information

Gene ID	1271
Alias Symbol	MGC1774
Other Names	Ciliary neurotrophic factor receptor subunit alpha, CNTF receptor subunit alpha, CNTFR-alpha, CNTFR
Format	Liquid. Purified antibody supplied in 1x PBS buffer with 0.09% (w/v) sodium azide and 2% sucrose.
Reconstitution & Storage	Add 50 ul of distilled water. Final anti-CNTFR antibody concentration is 1 mg/ml in PBS buffer with 2% sucrose. For longer periods of storage, store at 20°C. Avoid repeat freeze-thaw cycles.
Precautions	CNTFR antibody - C-terminal region is for research use only and not for use in diagnostic or therapeutic procedures.

Protein Information

Name	CNTFR
Function	Binds to CNTF. The alpha subunit provides the receptor specificity. Receptor for heterodimeric neurotrophic cytokine composed of CLCF1/CLC and CRLF1/CLF-1 (PubMed: 26858303). Acts as a receptor for the neuroprotective peptide humanin as part of a complex with IL6ST/GP130 and IL27RA/WSX1 (PubMed: 19386761).
Cellular Location	Cell membrane; Lipid-anchor, GPI-anchor.
Tissue Location	Nervous system and skeletal muscle.

References

Davis S.,et al.Science 253:59-63(1991).

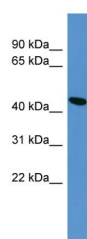
Valenzuela D.M.,et al.Genomics 25:157-163(1995).

Kalnine N.,et al.Submitted (OCT-2004) to the EMBL/GenBank/DDBJ databases.

Humphray S.J.,et al.Nature 429:369-374(2004).

Mural R.J.,et al.Submitted (SEP-2005) to the EMBL/GenBank/DDBJ databases.

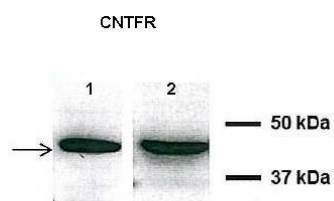
Images



WB Suggested Anti-CNTFR Antibody Titration: 0.2-1 µg/ml

ELISA Titer: 1:62500

Positive Control: HepG2 cell lysate



CNTFR

A549 , H441

[See Immunoblot 2 Data and customer Feedback for more Information](#)

Please note: All products are 'FOR RESEARCH USE ONLY. NOT FOR USE IN DIAGNOSTIC OR THERAPEUTIC PROCEDURES'.