

Cthrc1 antibody - C-terminal region

Rabbit Polyclonal Antibody

Catalog # AI14476

Product Information

Application	WB
Primary Accession	Q9D1D6
Other Accession	NM_026778 , NP_081054
Reactivity	Human, Mouse, Rat, Rabbit, Zebrafish, Pig, Dog, Guinea Pig, Horse, Bovine
Predicted	Human, Mouse, Rat, Rabbit, Zebrafish, Pig, Chicken, Dog, Guinea Pig, Bovine
Host	Rabbit
Clonality	Polyclonal
Calculated MW	26460

Additional Information

Gene ID	68588
Alias Symbol	1110014B07Rik
Other Names	Collagen triple helix repeat-containing protein 1, Cthrc1
Format	Liquid. Purified antibody supplied in 1x PBS buffer with 0.09% (w/v) sodium azide and 2% sucrose.
Reconstitution & Storage	Add 50 ul of distilled water. Final anti-Cthrc1 antibody concentration is 1 mg/ml in PBS buffer with 2% sucrose. For longer periods of storage, store at 20°C. Avoid repeat freeze-thaw cycles.
Precautions	Cthrc1 antibody - C-terminal region is for research use only and not for use in diagnostic or therapeutic procedures.

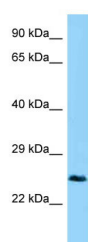
Protein Information

Name	Cthrc1
Function	May act as a negative regulator of collagen matrix deposition.
Cellular Location	Secreted, extracellular space, extracellular matrix

References

Carninci P.,et al.Science 309:1559-1563(2005).
Church D.M.,et al.PLoS Biol. 7:E1000112-E1000112(2009).
Mural R.J.,et al.Submitted (JUL-2005) to the EMBL/GenBank/DDBJ databases.

Images



WB Suggested Anti-Cthrc1 Antibody Titration: 1.0 µg/ml
Positive Control: Mouse Brain

Please note: All products are 'FOR RESEARCH USE ONLY. NOT FOR USE IN DIAGNOSTIC OR THERAPEUTIC PROCEDURES'.