

FSCN2 antibody - middle region

Rabbit Polyclonal Antibody

Catalog # AI14465

Product Information

Application	WB
Primary Accession	O14926
Other Accession	NM_001077182 , NP_001070650
Reactivity	Human, Mouse, Rat, Rabbit, Zebrafish, Dog, Guinea Pig, Horse, Bovine
Predicted	Human, Mouse, Rat, Rabbit, Zebrafish, Dog, Guinea Pig, Horse, Bovine
Host	Rabbit
Clonality	Polyclonal
Calculated MW	55057

Additional Information

Gene ID	25794
Alias Symbol	RFSN, RP30
Other Names	Fascin-2, Retinal fascin, FSCN2
Format	Liquid. Purified antibody supplied in 1x PBS buffer with 0.09% (w/v) sodium azide and 2% sucrose.
Reconstitution & Storage	Add 50 ul of distilled water. Final anti-FSCN2 antibody concentration is 1 mg/ml in PBS buffer with 2% sucrose. For longer periods of storage, store at 20°C. Avoid repeat freeze-thaw cycles.
Precautions	FSCN2 antibody - middle region is for research use only and not for use in diagnostic or therapeutic procedures.

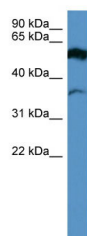
Protein Information

Name	FSCN2
Function	Acts as an actin bundling protein. May play a pivotal role in photoreceptor cell-specific events, such as disk morphogenesis.
Cellular Location	Cytoplasm, cytoskeleton. Cell projection, stereocilium
Tissue Location	Localized specifically in the outer and inner segments of the photoreceptor cells in the retina

References

Bardien-Kruger S.,et al.Eur. J. Hum. Genet. 7:332-338(1999).
Tubb B.E.,et al.Genomics 65:146-156(2000).
Zody M.C.,et al.Nature 440:1045-1049(2006).
Saishin Y.,et al.Invest. Ophthalmol. Vis. Sci. 41:2087-2095(2000).
Wada Y.,et al.Invest. Ophthalmol. Vis. Sci. 42:2395-2400(2001).

Images



WB Suggested Anti-FSCN2 Antibody Titration: 0.2-1 µg/ml
ELISA Titer: 1:312500
Positive Control: Human brain

Please note: All products are 'FOR RESEARCH USE ONLY. NOT FOR USE IN DIAGNOSTIC OR THERAPEUTIC PROCEDURES'.