

# Aldh1a2 Antibody - C-terminal region

Rabbit Polyclonal Antibody

Catalog # AI14461

## Product Information

<b>Application</b>	WB
<b>Primary Accession</b>	<a href="#">Q62148</a>
<b>Other Accession</b>	<a href="#">NM_009022</a> , <a href="#">NP_033048</a>
<b>Reactivity</b>	Human, Mouse, Rat, Rabbit, Zebrafish, Dog, Guinea Pig, Horse, Bovine, Sheep, Yeast
<b>Predicted</b>	Human, Mouse, Rat, Rabbit, Zebrafish, Pig, Dog, Guinea Pig, Horse, Bovine, Sheep, Yeast
<b>Host</b>	Rabbit
<b>Clonality</b>	Polyclonal
<b>Calculated MW</b>	56626

## Additional Information

<b>Gene ID</b>	19378
<b>Alias Symbol</b>	AV116159, Aldh1a7, Raldh1, Raldh2
<b>Other Names</b>	Retinal dehydrogenase 2, RALDH 2, RalDH2, 1.2.1.36, Aldehyde dehydrogenase family 1 member A2, Retinaldehyde-specific dehydrogenase type 2, RALDH(II), Aldh1a2, Aldh1a7, Raldh2
<b>Format</b>	Liquid. Purified antibody supplied in 1x PBS buffer with 0.09% (w/v) sodium azide and 2% sucrose.
<b>Reconstitution &amp; Storage</b>	Add 50 ul of distilled water. Final anti-Aldh1a2 antibody concentration is 1 mg/ml in PBS buffer with 2% sucrose. For longer periods of storage, store at 20°C. Avoid repeat freeze-thaw cycles.
<b>Precautions</b>	Aldh1a2 Antibody - C-terminal region is for research use only and not for use in diagnostic or therapeutic procedures.

## Protein Information

<b>Name</b>	Aldh1a2
<b>Synonyms</b>	Aldh1a7, Raldh2 {ECO:0000303   PubMed:8797}
<b>Function</b>	Catalyzes the NAD-dependent oxidation of aldehyde substrates, such as all-trans-retinal and all-trans-13,14-dihydroretinal, to their corresponding carboxylic acids, all-trans-retinoate and all-trans- 13,14-dihydroretinoate, respectively (PubMed: <a href="#">15911617</a> , PubMed: <a href="#">8797830</a> ). Retinoate signaling is critical for the transcriptional control of many genes, for instance it is crucial for initiation of meiosis in both male and female (Probable). Recognizes

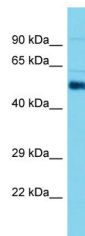
retinal as substrate, both in its free form and when bound to cellular retinol-binding protein (By similarity). Lacks activity with benzaldehyde, acetaldehyde and octanal (PubMed:[8797830](#)). Displays complete lack of activity with citral (By similarity).

**Cellular Location**

Cytoplasm.

## Images

---



Host: Rabbit  
Target Name: Aldh1a2  
Sample Tissue: Mouse Testis lysates  
Antibody Dilution: 1.0µg/ml

Please note: All products are 'FOR RESEARCH USE ONLY. NOT FOR USE IN DIAGNOSTIC OR THERAPEUTIC PROCEDURES'.