

# Cpne6 antibody - C-terminal region

Rabbit Polyclonal Antibody

Catalog # AI14400

## Product Information

<b>Application</b>	WB
<b>Primary Accession</b>	<a href="#">Q9Z140</a>
<b>Other Accession</b>	<a href="#">NM_009947</a> , <a href="#">NP_034077</a>
<b>Reactivity</b>	Human, Mouse, Rat, Rabbit, Zebrafish, Pig, Dog, Guinea Pig, Horse, Bovine, Sheep
<b>Predicted Host</b>	Human, Mouse, Rat, Rabbit, Pig, Bovine
<b>Clonality</b>	Rabbit
<b>Calculated MW</b>	Polyclonal 61781

## Additional Information

<b>Gene ID</b>	12891
<b>Alias Symbol</b>	AU067659, BB076446
<b>Other Names</b>	Copine-6, Copine VI, Neuronal-copine, N-copine, Cpne6
<b>Format</b>	Liquid. Purified antibody supplied in 1x PBS buffer with 0.09% (w/v) sodium azide and 2% sucrose.
<b>Reconstitution &amp; Storage</b>	Add 50 ul of distilled water. Final anti-Cpne6 antibody concentration is 1 mg/ml in PBS buffer with 2% sucrose. For longer periods of storage, store at 20°C. Avoid repeat freeze-thaw cycles.
<b>Precautions</b>	Cpne6 antibody - C-terminal region is for research use only and not for use in diagnostic or therapeutic procedures.

## Protein Information

<b>Name</b>	Cpne6 {ECO:0000312   MGI:MGI:1334445}
<b>Function</b>	Calcium-dependent phospholipid-binding protein that plays a role in calcium-mediated intracellular processes. Binds phospholipid membranes in a calcium-dependent manner (PubMed: <a href="#">9886090</a> ). Plays a role in dendrite formation by melanocytes (By similarity).
<b>Cellular Location</b>	Cytoplasm. Cell membrane. Endosome. Cytoplasmic vesicle, clathrin-coated vesicle. Perikaryon. Cell projection, dendrite. Note=Mainly cytoplasmic in absence of calcium. Associated predominantly with membranes in presence of calcium (PubMed:9886090). Translocates to the cell membrane in a calcium-dependent manner (PubMed:21087455, PubMed:26175110).

Colocalized with transferrin in intracellular clathrin-coated membrane vesicles in a calcium-dependent manner (PubMed:21087455)

## Tissue Location

Expressed in the brain (PubMed:9645480). Expressed in pyramidal cells, granule cells, and neurons in the dentate gyrus of the hippocampus and in granule cells of the olfactory bulb (at protein level). Expressed in pyramidal cells of the CA1-CA3 regions, in granule cells of the dentate gyrus, in granule cells of the olfactory bulbs, in the mitral cell layer and in neurons of the cerebral cortex layer II, brainstem and spinal cord (PubMed:9886090). Not detected in glial cells (PubMed:9645480, PubMed:9886090).

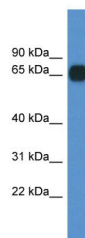
## References

---

Nakayama T., et al. FEBS Lett. 428:80-84(1998).

## Images

---



WB Suggested Anti-Cpne6 Antibody Titration: 1.0 µg/ml  
Positive Control: Mouse Pancreas

Please note: All products are 'FOR RESEARCH USE ONLY. NOT FOR USE IN DIAGNOSTIC OR THERAPEUTIC PROCEDURES'.