

DBP antibody - C-terminal region

Rabbit Polyclonal Antibody

Catalog # AI14230

Product Information

Application	WB
Primary Accession	Q10586
Other Accession	NM_001352 , NP_001343
Reactivity	Human, Mouse, Rat, Rabbit, Zebrafish, Pig, Dog, Guinea Pig, Horse, Bovine, Sheep
Predicted Host	Human, Mouse, Rat, Dog, Guinea Pig, Bovine, Sheep
Clonality	Rabbit
Calculated MW	Polyclonal 34349

Additional Information

Gene ID	1628
Alias Symbol	DABP
Other Names	D site-binding protein, Albumin D box-binding protein, Albumin D-element-binding protein, Tax-responsive enhancer element-binding protein 302, TaxREB302, DBP
Format	Liquid. Purified antibody supplied in 1x PBS buffer with 0.09% (w/v) sodium azide and 2% sucrose.
Reconstitution & Storage	Add 50 ul of distilled water. Final anti-DBP antibody concentration is 1 mg/ml in PBS buffer with 2% sucrose. For longer periods of storage, store at 20°C. Avoid repeat freeze-thaw cycles.
Precautions	DBP antibody - C-terminal region is for research use only and not for use in diagnostic or therapeutic procedures.

Protein Information

Name	DBP
Function	This transcriptional activator recognizes and binds to the sequence 5'-RTTAYGTAAAY-3' found in the promoter of genes such as albumin, CYP2A4 and CYP2A5. It is not essential for circadian rhythm generation, but modulates important clock output genes. May be a direct target for regulation by the circadian pacemaker component clock. May affect circadian period and sleep regulation.
Cellular Location	Nucleus.

Tissue Location

Ubiquitously expressed. Expressed in the suprachiasmatic nuclei (SCN) and in most peripheral tissues, with a strong circadian rhythmicity

References

Khatib Z.A.,et al.Genomics 23:344-351(1994).

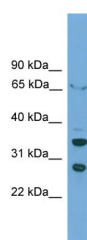
Shutler G.,et al.Genomics 34:334-339(1996).

Yu W.,et al.Genome Res. 7:353-358(1997).

Kalnine N.,et al.Submitted (MAY-2003) to the EMBL/GenBank/DDBJ databases.

Mural R.J.,et al.Submitted (JUL-2005) to the EMBL/GenBank/DDBJ databases.

Images



WB Suggested Anti-DBP Antibody Titration: 0.2-1 µg/ml

ELISA Titer: 1:312500

Positive Control: HepG2 cell lysate

Please note: All products are 'FOR RESEARCH USE ONLY. NOT FOR USE IN DIAGNOSTIC OR THERAPEUTIC PROCEDURES'.