

# FEV antibody - N-terminal region

Rabbit Polyclonal Antibody

Catalog # AI14217

## Product Information

---

<b>Application</b>	WB
<b>Primary Accession</b>	<a href="#">Q99581</a>
<b>Other Accession</b>	<a href="#">NM_017521</a> , <a href="#">NP_059991</a>
<b>Reactivity</b>	Human, Mouse, Rat, Rabbit, Zebrafish, Dog, Guinea Pig, Horse, Bovine
<b>Predicted</b>	Human, Mouse, Rat, Zebrafish, Guinea Pig, Bovine
<b>Host</b>	Rabbit
<b>Clonality</b>	Polyclonal
<b>Calculated MW</b>	25030

## Additional Information

---

<b>Gene ID</b>	54738
<b>Alias Symbol</b>	HSRNAFEV, PET-1
<b>Other Names</b>	Protein FEV, Fifth Ewing variant protein, PC12 ETS domain-containing transcription factor 1, PC12 ETS factor 1, Pet-1, FEV, PET1
<b>Format</b>	Liquid. Purified antibody supplied in 1x PBS buffer with 0.09% (w/v) sodium azide and 2% sucrose.
<b>Reconstitution &amp; Storage</b>	Add 50 ul of distilled water. Final anti-FEV antibody concentration is 1 mg/ml in PBS buffer with 2% sucrose. For longer periods of storage, store at 20°C. Avoid repeat freeze-thaw cycles.
<b>Precautions</b>	FEV antibody - N-terminal region is for research use only and not for use in diagnostic or therapeutic procedures.

## Protein Information

---

<b>Name</b>	FEV
<b>Synonyms</b>	PET1
<b>Function</b>	Functions as a transcriptional regulator. According to PubMed: <a href="#">12761502</a> , it functions as a transcriptional repressor. Functions in the differentiation and the maintenance of the central serotonergic neurons. May play a role in cell growth.
<b>Cellular Location</b>	Nucleus {ECO:0000255   PROSITE-ProRule:PRU00237, ECO:0000269   PubMed:12761502}

## Tissue Location

In brain, exclusively expressed in the major serotonergic neurons of the dorsal and median raphe nuclei located in the midbrain and pons. Also detected in prostate and small intestine

## References

---

Peter M.,et al.Oncogene 14:1159-1164(1997).

Hillier L.W.,et al.Nature 434:724-731(2005).

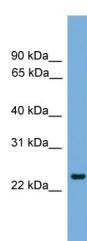
Mural R.J.,et al.Submitted (JUL-2005) to the EMBL/GenBank/DDBJ databases.

Maurer P.,et al.Oncogene 22:3319-3329(2003).

Maurer P.,et al.Neurosci. Lett. 357:215-218(2004).

## Images

---



WB Suggested Anti-FEV Antibody Titration: 0.2-1 µg/ml

ELISA Titer: 1:1562500

Positive Control: Hela cell lysate

Please note: All products are 'FOR RESEARCH USE ONLY. NOT FOR USE IN DIAGNOSTIC OR THERAPEUTIC PROCEDURES'.