

Smek2 antibody - C-terminal region

Rabbit Polyclonal Antibody

Catalog # AI14115

Product Information

Application	WB
Primary Accession	Q922R5
Other Accession	NM_134034 , NP_598795
Reactivity	Human, Mouse, Rat, Rabbit, Pig, Dog, Guinea Pig, Horse, Bovine
Predicted	Mouse, Rat, Rabbit, Pig, Chicken, Dog, Guinea Pig, Horse, Bovine
Host	Rabbit
Clonality	Polyclonal
Calculated MW	93934

Additional Information

Gene ID	104570
Alias Symbol Other Names	AW011752, AW557776, KIAA1387, mKIAA1387, RP23-393O10.1 Serine/threonine-protein phosphatase 4 regulatory subunit 3B, SMEK homolog 2, Smek2, Kiaa1387, Pp4r3b, Ppp4r3b
Format	Liquid. Purified antibody supplied in 1x PBS buffer with 0.09% (w/v) sodium azide and 2% sucrose.
Reconstitution & Storage	Add 50 ul of distilled water. Final anti-Smek2 antibody concentration is 1 mg/ml in PBS buffer with 2% sucrose. For longer periods of storage, store at 20°C. Avoid repeat freeze-thaw cycles.
Precautions	Smek2 antibody - C-terminal region is for research use only and not for use in diagnostic or therapeutic procedures.

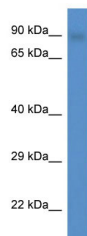
Protein Information

Name	Ppp4r3b {ECO:0000250 UniProtKB:Q5MIZ7}
Function	Regulatory subunit of serine/threonine-protein phosphatase 4 (PP4). May regulate the activity of PPP4C at centrosomal microtubule organizing centers (By similarity).
Cellular Location	Cytoplasm. Cytoplasm, cytoskeleton, microtubule organizing center, centrosome. Nucleus. Note=In interphase localized in the cytoplasm and (with higher levels) the nucleus. During metaphase located in pericentriolar regions

References

Okazaki N.,et al.DNA Res. 10:167-180(2003).
Carninci P.,et al.Science 309:1559-1563(2005).
Church D.M.,et al.PLoS Biol. 7:E1000112-E1000112(2009).

Images



WB Suggested Anti-Smek2 Antibody Titration: 1.0 µg/ml
Positive Control: Mouse Heart

Please note: All products are 'FOR RESEARCH USE ONLY. NOT FOR USE IN DIAGNOSTIC OR THERAPEUTIC PROCEDURES'.