

Lap3 antibody - N-terminal region

Rabbit Polyclonal Antibody

Catalog # AI13998

Product Information

Application	WB
Primary Accession	Q9CPY7
Other Accession	NM_024434 , NP_077754
Reactivity	Human, Mouse, Rat, Rabbit, Zebrafish, Pig, Dog, Guinea Pig, Horse, Bovine
Predicted	Rabbit, Zebrafish, Chicken, Dog, Horse
Host	Rabbit
Clonality	Polyclonal
Calculated MW	56141

Additional Information

Gene ID	66988
Alias Symbol Other Names	2410015L10Rik, AA410100, Lap, Lapep, Pep-7, Pep-S, Pep7, Peps, LAP-3 Cytosol aminopeptidase, 3.4.11.1, Leucine aminopeptidase 3, LAP-3, Leucyl aminopeptidase, Proline aminopeptidase, 3.4.11.5, Prolyl aminopeptidase, Lap3, Lapep
Format	Liquid. Purified antibody supplied in 1x PBS buffer with 0.09% (w/v) sodium azide and 2% sucrose.
Reconstitution & Storage	Add 50 ul of distilled water. Final anti-Lap3 antibody concentration is 1 mg/ml in PBS buffer with 2% sucrose. For longer periods of storage, store at 20°C. Avoid repeat freeze-thaw cycles.
Precautions	Lap3 antibody - N-terminal region is for research use only and not for use in diagnostic or therapeutic procedures.

Protein Information

Name	Lap3 {ECO:0000312 MGI:MGI:1914238}
Synonyms	Lapep
Function	Cytosolic metallopeptidase that catalyzes the removal of unsubstituted N-terminal hydrophobic amino acids from various peptides. The presence of Zn(2+) ions is essential for the peptidase activity, and the association with other cofactors can modulate the substrate specificity of the enzyme. For instance, in the presence of Mn(2+), it displays a specific Cys-Gly hydrolyzing activity of Cys-Gly-S- conjugates. Involved in the metabolism of glutathione and in the degradation of glutathione S-conjugates, which may play a role in

the control of the cell redox status.

Cellular Location

Cytoplasm {ECO:0000250|UniProtKB:Q68FS4}.

References

Zhuang D.Z.,et al.Submitted (JAN-2001) to the EMBL/GenBank/DDBJ databases.

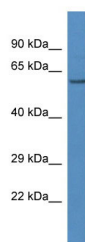
Ebert L.,et al.Submitted (JUL-2005) to the EMBL/GenBank/DDBJ databases.

Carninci P.,et al.Science 309:1559-1563(2005).

Lubec G.,et al.Submitted (APR-2007) to UniProtKB.

Villen J.,et al.Proc. Natl. Acad. Sci. U.S.A. 104:1488-1493(2007).

Images



WB Suggested Anti-Lap3 Antibody Titration: 1.0 µg/ml
Positive Control: Mouse Liver

Please note: All products are 'FOR RESEARCH USE ONLY. NOT FOR USE IN DIAGNOSTIC OR THERAPEUTIC PROCEDURES'.