

EXOC4 antibody - N-terminal region

Rabbit Polyclonal Antibody

Catalog # AI13920

Product Information

Application	WB
Primary Accession	Q96A65
Other Accession	NM_001037126 , NP_001032203
Reactivity	Human, Mouse, Rat, Rabbit, Zebrafish, Pig, Dog, Horse, Bovine
Predicted	Human, Mouse, Rat, Zebrafish, Pig, Chicken, Horse, Bovine
Host	Rabbit
Clonality	Polyclonal
Calculated MW	110498

Additional Information

Gene ID	60412
Alias Symbol	MGC27170, REC8, SEC8, SEC8L1, Sec8p
Other Names	Exocyst complex component 4, Exocyst complex component Sec8, EXOC4, KIAA1699, SEC8, SEC8L1
Format	Liquid. Purified antibody supplied in 1x PBS buffer with 0.09% (w/v) sodium azide and 2% sucrose.
Reconstitution & Storage	Add 50 ul of distilled water. Final anti-EXOC4 antibody concentration is 1 mg/ml in PBS buffer with 2% sucrose. For longer periods of storage, store at 20°C. Avoid repeat freeze-thaw cycles.
Precautions	EXOC4 antibody - N-terminal region is for research use only and not for use in diagnostic or therapeutic procedures.

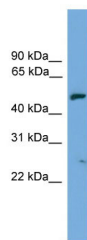
Protein Information

Name	EXOC4
Synonyms	KIAA1699, SEC8, SEC8L1
Function	Component of the exocyst complex involved in the docking of exocytic vesicles with fusion sites on the plasma membrane.
Cellular Location	Midbody, Midbody ring. Cell projection {ECO:0000250 UniProtKB:Q62824}. Cytoplasm, cytoskeleton, microtubule organizing center, centrosome Note=Colocalizes with CNTRL/centriolin at the midbody ring (PubMed:16213214). Localizes at the leading edge of migrating cells (By similarity). {ECO:0000250 UniProtKB:Q62824,

References

Sha J.H.,et al.Submitted (MAY-2001) to the EMBL/GenBank/DDBJ databases.
Ota T.,et al.Nat. Genet. 36:40-45(2004).
Bechtel S.,et al.BMC Genomics 8:399-399(2007).
Scherer S.W.,et al.Science 300:767-772(2003).
Hillier L.W.,et al.Nature 424:157-164(2003).

Images



WB Suggested Anti-EXOC4 Antibody Titration: 0.2-1 µg/ml
ELISA Titer: 1:312500
Positive Control: Human Placenta

Please note: All products are 'FOR RESEARCH USE ONLY. NOT FOR USE IN DIAGNOSTIC OR THERAPEUTIC PROCEDURES'.