

CLEC4G antibody - N-terminal region

Rabbit Polyclonal Antibody

Catalog # AI13869

Product Information

Application	WB
Primary Accession	Q6UXB4
Other Accession	NM_198492 , NP_940894
Reactivity	Human, Horse
Predicted	Human
Host	Rabbit
Clonality	Polyclonal
Calculated MW	32562

Additional Information

Gene ID	339390
Alias Symbol Other Names	LP2698, LSEctin, UNQ431, DTTR431 C-type lectin domain family 4 member G, CLEC4G
Format	Liquid. Purified antibody supplied in 1x PBS buffer with 0.09% (w/v) sodium azide and 2% sucrose.
Reconstitution & Storage	Add 50 ul of distilled water. Final anti-CLEC4G antibody concentration is 1 mg/ml in PBS buffer with 2% sucrose. For longer periods of storage, store at 20°C. Avoid repeat freeze-thaw cycles.
Precautions	CLEC4G antibody - N-terminal region is for research use only and not for use in diagnostic or therapeutic procedures.

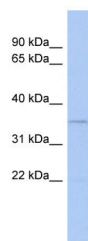
Protein Information

Name	CLEC4G
Function	Binds mannose, N-acetylglucosamine (GlcNAc) and fucose, but not galactose, in a Ca(2+)-dependent manner, in vitro.
Cellular Location	Cell membrane; Single-pass type II membrane protein
Tissue Location	Expressed exclusively in fetal and adult liver and in lymph nodes. Specifically expressed by endothelial cells lining lymph node and liver sinuses (at protein level)

References

Clark H.F.,et al.Genome Res. 13:2265-2270(2003).

Images



WB Suggested Anti-CLEC4G Antibody Titration: 0.2-1 μ g/ml
ELISA Titer: 1:62500
Positive Control: Human Placenta

Please note: All products are 'FOR RESEARCH USE ONLY. NOT FOR USE IN DIAGNOSTIC OR THERAPEUTIC PROCEDURES'.