

# COX18 antibody - middle region

Rabbit Polyclonal Antibody

Catalog # AI13842

## Product Information

---

|                          |   |
|--------------------------|---|
| <b>Application</b>       | WB  |
| <b>Primary Accession</b> | <a href="#">Q8N8Q8</a>                                    |
| <b>Other Accession</b>   | <a href="#">NM_173827</a> , <a href="#">NP_776188</a>     |
| <b>Reactivity</b>        | Human, Mouse, Rat, Rabbit, Dog, Guinea Pig, Horse, Bovine |
| <b>Predicted</b>         | Human, Mouse, Dog, Guinea Pig, Bovine                     |
| <b>Host</b>              | Rabbit  |
| <b>Clonality</b>         | Polyclonal  |
| <b>Calculated MW</b>     | 37063   |

## Additional Information

---

|                                     |  |
|-------------------------------------|--|
| <b>Gene ID</b>                      | 285521   |
| <b>Alias Symbol</b>                 | COX18HS, FLJ38991, MGC126733   |
| <b>Other Names</b>                  | Mitochondrial inner membrane protein COX18, COX18Hs, Cytochrome c oxidase assembly protein 18, COX18, OXA1L2   |
| <b>Format</b>                       | Liquid. Purified antibody supplied in 1x PBS buffer with 0.09% (w/v) sodium azide and 2% sucrose.  |
| <b>Reconstitution &amp; Storage</b> | Add 50 ul of distilled water. Final anti-COX18 antibody concentration is 1 mg/ml in PBS buffer with 2% sucrose. For longer periods of storage, store at 20°C. Avoid repeat freeze-thaw cycles. |
| <b>Precautions</b>                  | COX18 antibody - middle region is for research use only and not for use in diagnostic or therapeutic procedures.   |

## Protein Information

---

|                 |  |
|-----------------|--|
| <b>Name</b>     | COX18  |
| <b>Synonyms</b> | OXA1L2   |
| <b>Function</b> | Mitochondrial membrane insertase required for the translocation of the C-terminus of cytochrome c oxidase subunit II (MT- CO2/COX2) across the mitochondrial inner membrane. Plays a role in MT- CO2/COX2 maturation following the COX20-mediated stabilization of newly synthesized MT-CO2/COX2 protein and before the action of the metallochaperones SCO1/2. Essential for the assembly and stability of the mitochondrial respiratory chain complex IV (also known as cytochrome c oxidase). |

**Cellular Location**

Mitochondrion inner membrane; Multi-pass membrane protein

**References**

---

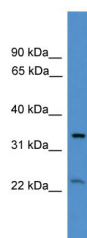
Sacconi S.,et al.Biochem. Biophys. Res. Commun. 337:832-839(2005).

Ota T.,et al.Nat. Genet. 36:40-45(2004).

Gaisne M.,et al.FEMS Yeast Res. 6:869-882(2006).

**Images**

---



WB Suggested Anti-COX18 Antibody Titration: 0.2-1 µg/ml

ELISA Titer: 1:62500

Positive Control: ACHN cell lysate

Please note: All products are 'FOR RESEARCH USE ONLY. NOT FOR USE IN DIAGNOSTIC OR THERAPEUTIC PROCEDURES'.