

# GCET2 antibody - middle region

Rabbit Polyclonal Antibody

Catalog # AI13815

## Product Information

---

<b>Application</b>	WB
<b>Primary Accession</b>	<a href="#">Q8N6F7</a>
<b>Other Accession</b>	<a href="#">NM_152785</a> , <a href="#">NP_689998</a>
<b>Reactivity</b>	Human
<b>Predicted</b>	Human
<b>Host</b>	Rabbit
<b>Clonality</b>	Polyclonal
<b>Calculated MW</b>	21005

## Additional Information

---

<b>Gene ID</b>	257144
<b>Alias Symbol</b> <b>Other Names</b>	GCAT2, HGAL, MGC40441, GCET2 Germinal center-associated signaling and motility protein, Germinal center B-cell-expressed transcript 2 protein, Germinal center-associated lymphoma protein, hGAL, GCSAM, GAL, GCET2
<b>Format</b>	Liquid. Purified antibody supplied in 1x PBS buffer with 0.09% (w/v) sodium azide and 2% sucrose.
<b>Reconstitution &amp; Storage</b>	Add 50 ul of distilled water. Final anti-GCET2 antibody concentration is 1 mg/ml in PBS buffer with 2% sucrose. For longer periods of storage, store at 20°C. Avoid repeat freeze-thaw cycles.
<b>Precautions</b>	GCET2 antibody - middle region is for research use only and not for use in diagnostic or therapeutic procedures.

## Protein Information

---

<b>Name</b>	GCSAM
<b>Synonyms</b>	GAL, GCET2
<b>Function</b>	Involved in the negative regulation of lymphocyte motility. It mediates the migration-inhibitory effects of IL6. Serves as a positive regulator of the RhoA signaling pathway. Enhancement of RhoA activation results in inhibition of lymphocyte and lymphoma cell motility by activation of its downstream effector ROCK. Is a regulator of B-cell receptor signaling, that acts through SYK kinase activation.

<b>Cellular Location</b>	Cytoplasm. Cell membrane. Note=It relocates from the cytoplasm to podosome-like structures upon cell treatment with IL6
<b>Tissue Location</b>	Expressed in diffuse large B-cell lymphoma (DLBCL) and several germinal center (GC)-like lymphoma cell lines (at protein level). Highly expressed in normal GC lymphocytes and GC-derived malignancies. Expressed in thymus and spleen

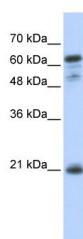
## References

---

Pan Z.,et al.Am. J. Pathol. 163:135-144(2003).  
Lossos I.S.,et al.Blood 101:433-440(2003).  
Muzny D.M.,et al.Nature 440:1194-1198(2006).  
Natkunam Y.,et al.Blood 105:3979-3986(2005).  
Lu X.,et al.Blood 110:4268-4277(2007).

## Images

---



WB Suggested Anti-GCET2 Antibody Titration: 0.2-1 µg/ml  
ELISA Titer: 1:62500  
Positive Control: Transfected 293T

Please note: All products are 'FOR RESEARCH USE ONLY. NOT FOR USE IN DIAGNOSTIC OR THERAPEUTIC PROCEDURES'.