

# Ldlrap1 Antibody - C-terminal region

Rabbit Polyclonal Antibody

Catalog # AI13774

## Product Information

<b>Application</b>	WB
<b>Primary Accession</b>	<a href="#">Q8C142</a>
<b>Other Accession</b>	<a href="#">NM_145554</a> , <a href="#">NP_663529</a>
<b>Reactivity</b>	Human, Mouse, Rat, Rabbit, Zebrafish, Dog, Guinea Pig, Horse, Bovine
<b>Predicted</b>	Human, Mouse, Rat, Rabbit, Zebrafish, Pig, Dog, Guinea Pig, Horse, Bovine
<b>Host</b>	Rabbit
<b>Clonality</b>	Polyclonal
<b>Calculated MW</b>	33975

## Additional Information

<b>Gene ID</b>	100017
<b>Alias Symbol</b>	AA691260, ARH2, Arh, Arh1, FHCB1, FHCB2
<b>Other Names</b>	Low density lipoprotein receptor adapter protein 1, Autosomal recessive hypercholesterolemia protein homolog, Ldlrap1, Arh
<b>Format</b>	Liquid. Purified antibody supplied in 1x PBS buffer with 0.09% (w/v) sodium azide and 2% sucrose.
<b>Reconstitution &amp; Storage</b>	Add 50 ul of distilled water. Final anti-Ldlrap1 antibody concentration is 1 mg/ml in PBS buffer with 2% sucrose. For longer periods of storage, store at 20°C. Avoid repeat freeze-thaw cycles.
<b>Precautions</b>	Ldlrap1 Antibody - C-terminal region is for research use only and not for use in diagnostic or therapeutic procedures.

## Protein Information

<b>Name</b>	Ldlrap1 {ECO:0000312 MGI:MGI:2140175}
<b>Function</b>	Adapter protein (clathrin-associated sorting protein (CLASP)) required for efficient endocytosis of the LDL receptor (LDLR) in polarized cells such as hepatocytes and lymphocytes, but not in non- polarized cells (fibroblasts). May be required for LDL binding and internalization but not for receptor clustering in coated pits. May facilitate the endocytosis of LDLR and LDLR-LDL complexes from coated pits by stabilizing the interaction between the receptor and the structural components of the pits. May also be involved in the internalization of other LDLR family members. Binds to phosphoinositides, which regulate clathrin bud assembly at the cell surface. Required for trafficking of LRP2 to the endocytic recycling compartment which

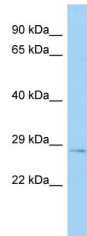
is necessary for LRP2 proteolysis, releasing a tail fragment which translocates to the nucleus and mediates transcriptional repression (By similarity).

**Cellular Location**

Cytoplasm.

**Images**

---



Host: Rabbit  
Target Name: Ldlrap1  
Sample Tissue: Mouse Testis lysates  
Antibody Dilution: 1.0µg/ml

Please note: All products are 'FOR RESEARCH USE ONLY. NOT FOR USE IN DIAGNOSTIC OR THERAPEUTIC PROCEDURES'.