

# APH1B Antibody - N-terminal region

Rabbit Polyclonal Antibody

Catalog # AI13623

## Product Information

---

<b>Application</b>	WB
<b>Primary Accession</b>	<a href="#">Q8WW43</a>
<b>Other Accession</b>	<a href="#">NM_031301</a> , <a href="#">NP_112591</a>
<b>Reactivity</b>	Human, Mouse, Rat, Rabbit, Pig, Dog, Guinea Pig, Bovine
<b>Predicted</b>	Human, Mouse, Rat, Rabbit, Pig, Dog, Guinea Pig, Bovine
<b>Host</b>	Rabbit
<b>Clonality</b>	Polyclonal
<b>Calculated MW</b>	28460

## Additional Information

---

<b>Gene ID</b>	83464
<b>Alias Symbol</b>	APH-1B, PRO1328, PSFL, TAAV688
<b>Other Names</b>	Gamma-secretase subunit APH-1B, APH-1b, Aph-1beta, Presenilin-stabilization factor-like, APH1B, PSFL
<b>Format</b>	Liquid. Purified antibody supplied in 1x PBS buffer with 0.09% (w/v) sodium azide and 2% sucrose.
<b>Reconstitution &amp; Storage</b>	Add 50 µl of distilled water. Final Anti-APH1B antibody concentration is 1 mg/ml in PBS buffer with 2% sucrose. For longer periods of storage, store at -20°C. Avoid repeat freeze-thaw cycles.
<b>Precautions</b>	APH1B Antibody - N-terminal region is for research use only and not for use in diagnostic or therapeutic procedures.

## Protein Information

---

<b>Name</b>	APH1B
<b>Synonyms</b>	PSFL
<b>Function</b>	Probable subunit of the gamma-secretase complex, an endoprotease complex that catalyzes the intramembrane cleavage of integral proteins such as Notch receptors and APP (amyloid-beta precursor protein). It probably represents a stabilizing cofactor for the presenilin homodimer that promotes the formation of a stable complex. Probably present in a minority of gamma-secretase complexes compared to APH1A.
<b>Cellular Location</b>	Membrane; Multi-pass membrane protein

## Tissue Location

Weakly or not expressed in leukocytes, lung, placenta, small intestine, liver, kidney, spleen thymus, colon, skeletal muscle, heart and brain.

## References

---

Lee H.-J.,et al.Submitted (MAY-2002) to the EMBL/GenBank/DDBJ databases.

Saito S.,et al.Biochem. Biophys. Res. Commun. 330:1068-1072(2005).

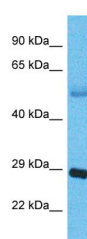
Wiemann S.,et al.Genome Res. 11:422-435(2001).

Clark H.F.,et al.Genome Res. 13:2265-2270(2003).

Ota T.,et al.Nat. Genet. 36:40-45(2004).

## Images

---



Host: Rabbit

Target Name: APH1B

Sample Tissue: Lung Tumor lysates

Antibody Dilution: 1.0µg/ml

Please note: All products are 'FOR RESEARCH USE ONLY. NOT FOR USE IN DIAGNOSTIC OR THERAPEUTIC PROCEDURES'.