

# ZPBP2 antibody - middle region

Rabbit Polyclonal Antibody

Catalog # AI13564

## Product Information

---

<b>Application</b>	WB
<b>Primary Accession</b>	<a href="#">Q6X784</a>
<b>Other Accession</b>	<a href="#">NM_198844</a> , <a href="#">NP_942141</a>
<b>Reactivity</b>	Human, Mouse, Rat, Rabbit, Pig, Guinea Pig, Horse
<b>Predicted</b>	Human, Mouse, Rat, Pig, Dog, Guinea Pig, Horse
<b>Host</b>	Rabbit
<b>Clonality</b>	Polyclonal
<b>Calculated MW</b>	38652

## Additional Information

---

<b>Gene ID</b>	124626
<b>Alias Symbol</b>	MGC41930, ZPBPL
<b>Other Names</b>	Zona pellucida-binding protein 2, ZPBP-like protein, ZPBP2, ZPBPL
<b>Format</b>	Liquid. Purified antibody supplied in 1x PBS buffer with 0.09% (w/v) sodium azide and 2% sucrose.
<b>Reconstitution &amp; Storage</b>	Add 50 ul of distilled water. Final anti-ZPBP2 antibody concentration is 1 mg/ml in PBS buffer with 2% sucrose. For longer periods of storage, store at 20°C. Avoid repeat freeze-thaw cycles.
<b>Precautions</b>	ZPBP2 antibody - middle region is for research use only and not for use in diagnostic or therapeutic procedures.

## Protein Information

---

<b>Name</b>	ZPBP2
<b>Synonyms</b>	ZPBPL
<b>Function</b>	Is implicated in sperm-oocyte interaction during fertilization.
<b>Cellular Location</b>	Cytoplasmic vesicle, secretory vesicle, acrosome {ECO:0000250 UniProtKB:Q6X786}. Secreted. Note=Released after the acrosomal reaction. {ECO:0000250 UniProtKB:Q6X786}
<b>Tissue Location</b>	Expressed specifically in testis.

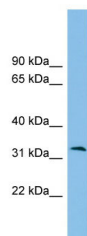
## References

---

Lin Y.-N.,et al.Submitted (MAR-2003) to the EMBL/GenBank/DDBJ databases.  
Ota T.,et al.Nat. Genet. 36:40-45(2004).  
Katoh M.,et al.Int. J. Mol. Med. 12:399-404(2003).  
Kaneko H.,et al.Hum. Genet. 130:671-683(2011).

## Images

---



WB Suggested Anti-ZPBP2 Antibody Titration: 0.2-1 µg/ml  
ELISA Titer: 1:312500  
Positive Control: Hela cell lysate

Please note: All products are 'FOR RESEARCH USE ONLY. NOT FOR USE IN DIAGNOSTIC OR THERAPEUTIC PROCEDURES'.