

TCTE1 antibody - middle region

Rabbit Polyclonal Antibody

Catalog # AI13554

Product Information

Application	WB
Primary Accession	Q5JU00
Other Accession	NM_182539 , NP_872345
Reactivity	Human, Mouse, Rat, Rabbit, Pig, Dog, Guinea Pig, Horse
Predicted	Human, Mouse, Rat, Chicken, Dog, Guinea Pig, Horse
Host	Rabbit
Clonality	Polyclonal
Calculated MW	55632

Additional Information

Gene ID	202500
Alias Symbol	D6S46, MGC33600
Other Names	T-complex-associated testis-expressed protein 1, Tcte-1, TCTE1
Format	Liquid. Purified antibody supplied in 1x PBS buffer with 0.09% (w/v) sodium azide and 2% sucrose.
Reconstitution & Storage	Add 50 ul of distilled water. Final anti-TCTE1 antibody concentration is 1 mg/ml in PBS buffer with 2% sucrose. For longer periods of storage, store at 20°C. Avoid repeat freeze-thaw cycles.
Precautions	TCTE1 antibody - middle region is for research use only and not for use in diagnostic or therapeutic procedures.

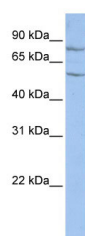
Protein Information

Name	TCTE1
Synonyms	DRC5 {ECO:0000250 UniProtKB:A6H639}
Function	Component of the nexin-dynein regulatory complex (N-DRC) a key regulator of ciliary/flagellar motility which maintains the alignment and integrity of the distal axoneme and regulates microtubule sliding in motile axonemes. May play a role in the assembly of N-DRC. May be required for sperm motility.
Cellular Location	Cell projection, cilium, flagellum {ECO:0000250 UniProtKB:A6H639}. Cytoplasm, cytoskeleton, flagellum axoneme {ECO:0000250 UniProtKB:A8HMZ4}. Note=Detected along the length of the sperm flagellum. {ECO:0000250 UniProtKB:A6H639}

References

Ota T.,et al.Nat. Genet. 36:40-45(2004).
Mungall A.J.,et al.Nature 425:805-811(2003).

Images



WB Suggested Anti-TCTE1 Antibody Titration: 0.2-1 µg/ml
ELISA Titer: 1:312500
Positive Control: HepG2 cell lysate

Please note: All products are 'FOR RESEARCH USE ONLY. NOT FOR USE IN DIAGNOSTIC OR THERAPEUTIC PROCEDURES'.