

NET1 antibody - middle region

Rabbit Polyclonal Antibody

Catalog # AI13373

Product Information

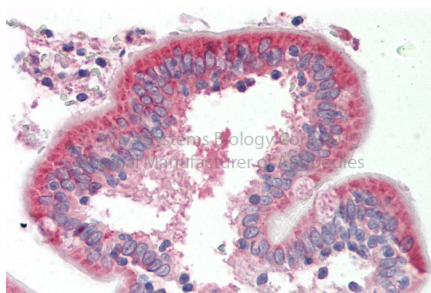
Application	WB
Primary Accession	Q5SQI7
Other Accession	NM_005863 , NP_005854
Reactivity	Human, Mouse, Rat, Rabbit, Zebrafish, Dog, Guinea Pig, Horse, Bovine, Yeast
Predicted	Human, Mouse, Rat, Rabbit, Zebrafish, Chicken, Dog, Guinea Pig, Horse, Bovine
Host	Rabbit
Clonality	Polyclonal
Calculated MW	62 KDa

Additional Information

Alias Symbol	ARHGEF8, NET1A
Format	Liquid. Purified antibody supplied in 1x PBS buffer with 0.09% (w/v) sodium azide and 2% sucrose.
Reconstitution & Storage	Add 50 ul of distilled water. Final anti-NET1 antibody concentration is 1 mg/ml in PBS buffer with 2% sucrose. For longer periods of storage, store at 20°C. Avoid repeat freeze-thaw cycles.
Precautions	NET1 antibody - middle region is for research use only and not for use in diagnostic or therapeutic procedures.

Protein Information

Images



Rabbit Anti-NET1 antibody Catalog Number: ARP52123
Formalin Fixed Paraffin Embedded Tissue: Human Adult
Small intestine Observed Staining: Cytoplasm in
hepatocytes Primary Antibody Concentration: 1:600
Secondary Antibody: Donkey anti-Rabbit-Cy3 Secondary
Antibody Concentration: 1:200 Magnification: 20X
Exposure Time: 0.5 - 2.0 sec

WB Suggested Anti-NET1 Antibody Titration: 0.2-1 µg/ml



ELISA Titer: 1:312500
Positive Control: Jurkat cell lysate

Please note: All products are 'FOR RESEARCH USE ONLY. NOT FOR USE IN DIAGNOSTIC OR THERAPEUTIC PROCEDURES'.