

NET1 antibody - N-terminal region

Rabbit Polyclonal Antibody

Catalog # AI13372

Product Information

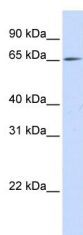
Application	WB
Primary Accession	Q5SQI7
Other Accession	NM_005863 , NP_005854
Reactivity	Human, Mouse, Rat, Rabbit, Pig, Dog, Guinea Pig, Horse, Bovine
Predicted	Human, Mouse, Rat, Rabbit, Dog, Guinea Pig, Horse, Bovine
Host	Rabbit
Clonality	Polyclonal
Calculated MW	62 KDa

Additional Information

Alias Symbol	ARHGEF8, NET1A
Format	Liquid. Purified antibody supplied in 1x PBS buffer with 0.09% (w/v) sodium azide and 2% sucrose.
Reconstitution & Storage	Add 50 ul of distilled water. Final anti-NET1 antibody concentration is 1 mg/ml in PBS buffer with 2% sucrose. For longer periods of storage, store at 20°C. Avoid repeat freeze-thaw cycles.
Precautions	NET1 antibody - N-terminal region is for research use only and not for use in diagnostic or therapeutic procedures.

Protein Information

Images



WB Suggested Anti-NET1 Antibody Titration: 0.2-1 µg/ml
ELISA Titer: 1:62500
Positive Control: 293T cell lysate
NET1 is strongly supported by BioGPS gene expression data to be expressed in Human HEK293T cells

Citations

- [The guanine nucleotide exchange factor Net1 facilitates the specification of dorsal cell fates in zebrafish embryos by promoting maternal \$\beta\$ -catenin activation.](#)

Please note: All products are 'FOR RESEARCH USE ONLY. NOT FOR USE IN DIAGNOSTIC OR THERAPEUTIC PROCEDURES'.