

ROPN1B antibody - N-terminal region

Rabbit Polyclonal Antibody

Catalog # AI13329

Product Information

Application	WB
Primary Accession	Q9BZX4
Other Accession	NM_001012337 , NP_001012337
Reactivity	Human, Mouse, Rat, Rabbit, Zebrafish, Pig, Dog, Horse, Bovine
Predicted	Human
Host	Rabbit
Clonality	Polyclonal
Calculated MW	23964

Additional Information

Gene ID	152015
Other Names	Ropporin-1B, Rhophilin-associated protein 1B, ROPN1B
Format	Liquid. Purified antibody supplied in 1x PBS buffer with 0.09% (w/v) sodium azide and 2% sucrose.
Reconstitution & Storage	Add 50 ul of distilled water. Final anti-ROPN1B antibody concentration is 1 mg/ml in PBS buffer with 2% sucrose. For longer periods of storage, store at 20°C. Avoid repeat freeze-thaw cycles.
Precautions	ROPN1B antibody - N-terminal region is for research use only and not for use in diagnostic or therapeutic procedures.

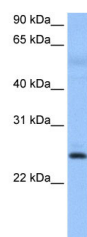
Protein Information

Name	ROPN1B
Function	Important for male fertility. With ROPN1L, involved in fibrous sheath integrity and sperm motility, plays a role in PKA- dependent signaling processes required for spermatozoa capacitation.
Cellular Location	Cell projection, cilium, flagellum {ECO:0000250 UniProtKB:Q9ESG2}. Note=In the sperm tail, found in the principal piece and in the cytoplasmic droplet located at the distal end of the midpiece. Inner surface of the fibrous sheath {ECO:0000250 UniProtKB:Q9ESG2}

References

Carr D.W.,et al.J. Biol. Chem. 276:17332-17338(2001).
Mural R.J.,et al.Submitted (SEP-2005) to the EMBL/GenBank/DDBJ databases.

Images



WB Suggested Anti-ROPN1B Antibody Titration: 0.2-1
 $\mu\text{g/ml}$
Positive Control: Human Muscle

Please note: All products are 'FOR RESEARCH USE ONLY. NOT FOR USE IN DIAGNOSTIC OR THERAPEUTIC PROCEDURES'.