

Cct7 antibody - C-terminal region

Rabbit Polyclonal Antibody

Catalog # AI13328

Product Information

Application	WB
Primary Accession	P80313
Other Accession	NM_007638 , NP_031664
Reactivity	Human, Mouse, Rat, Rabbit, Zebrafish, Pig, Dog, Guinea Pig, Horse, Bovine
Predicted	Human, Mouse, Rat, Rabbit, Zebrafish, Pig, Chicken, Guinea Pig, Horse, Bovine
Host	Rabbit
Clonality	Polyclonal
Calculated MW	59652

Additional Information

Gene ID	12468
Alias Symbol	AA408524, AL022769, Ccth, Cctz
Other Names	T-complex protein 1 subunit eta, TCP-1-eta, CCT-eta, Cct7, Ccth
Format	Liquid. Purified antibody supplied in 1x PBS buffer with 0.09% (w/v) sodium azide and 2% sucrose.
Reconstitution & Storage	Add 50 ul of distilled water. Final anti-Cct7 antibody concentration is 1 mg/ml in PBS buffer with 2% sucrose. For longer periods of storage, store at 20°C. Avoid repeat freeze-thaw cycles.
Precautions	Cct7 antibody - C-terminal region is for research use only and not for use in diagnostic or therapeutic procedures.

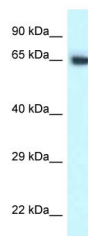
Protein Information

Name	Cct7
Synonyms	Ccth
Function	Component of the chaperonin-containing T-complex (TRiC), a molecular chaperone complex that assists the folding of actin, tubulin and other proteins upon ATP hydrolysis. The TRiC complex mediates the folding of WRAP53/TCAB1, thereby regulating telomere maintenance.
Cellular Location	Cytoplasm.

References

Kubota H.,et al.Curr. Biol. 4:89-99(1994).
Kubota H.,et al.Eur. J. Biochem. 262:492-500(1999).
Lubec G.,et al.Submitted (JAN-2009) to UniProtKB.
Park J.,et al.Mol. Cell 50:919-930(2013).

Images



Cct7 antibody - C-terminal region (AI13328) validated by WB using 293T cells lysate at 1:1,000 dilution for antibody samples and 1:10,000 for secondary antibodies.

Please note: All products are 'FOR RESEARCH USE ONLY. NOT FOR USE IN DIAGNOSTIC OR THERAPEUTIC PROCEDURES'.