

DISP1 antibody - middle region

Rabbit Polyclonal Antibody

Catalog # AI13137

Product Information

| | |
|--------------------------|---|
| Application | WB |
| Primary Accession | Q96F81 |
| Other Accession | NM_032890 , NP_116279 |
| Reactivity | Human, Mouse, Rat, Rabbit, Zebrafish, Pig, Horse |
| Predicted | Human, Mouse, Rat, Rabbit, Zebrafish, Pig, Chicken, Horse |
| Host | Rabbit |
| Clonality | Polyclonal |
| Calculated MW | 170934 |

Additional Information

| | |
|---|--|
| Gene ID | 84976 |
| Alias Symbol Other Names | DISPA, DKFZP434I0428, FLJ43740, MGC104180, MGC13130, MGC16796 Protein dispatched homolog 1, DISP1, DISPA |
| Format | Liquid. Purified antibody supplied in 1x PBS buffer with 0.09% (w/v) sodium azide and 2% sucrose. |
| Reconstitution & Storage | Add 50 ul of distilled water. Final anti-DISP1 antibody concentration is 1 mg/ml in PBS buffer with 2% sucrose. For longer periods of storage, store at 20°C. Avoid repeat freeze-thaw cycles. |
| Precautions | DISP1 antibody - middle region is for research use only and not for use in diagnostic or therapeutic procedures. |

Protein Information

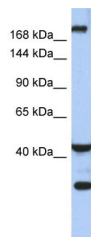
| | |
|--------------------------|---|
| Name | DISP1 |
| Synonyms | DISPA |
| Function | Functions in hedgehog (Hh) signaling. Regulates the release and extracellular accumulation of cholesterol-modified hedgehog proteins and is hence required for effective production of the Hh signal (By similarity). Synergizes with SCUBE2 to cause an increase in SHH secretion (PubMed: 22902404). |
| Cellular Location | Membrane; Multi-pass membrane protein |

References

Ota T.,et al.Nat. Genet. 36:40-45(2004).

Bechtel S.,et al.BMC Genomics 8:399-399(2007).

Images



WB Suggested Anti-DISP1 Antibody Titration: 0.2-1 µg/ml

ELISA Titer: 1:1562500

Positive Control: Human Small Intestine

Please note: All products are 'FOR RESEARCH USE ONLY. NOT FOR USE IN DIAGNOSTIC OR THERAPEUTIC PROCEDURES'.