

Popdc3 antibody - C-terminal region

Rabbit Polyclonal Antibody

Catalog # AI13068

Product Information

Application	WB
Primary Accession	Q9ES81
Other Accession	NM_024286 , NP_077248
Reactivity	Human, Mouse, Rat, Rabbit, Zebrafish, Pig, Dog, Guinea Pig, Horse, Bovine
Predicted	Human, Zebrafish, Pig, Chicken, Dog, Guinea Pig, Horse, Bovine
Host	Rabbit
Clonality	Polyclonal
Calculated MW	33612

Additional Information

Gene ID	78977
Alias Symbol	AA682104, MGC141238, Pop3
Other Names	Popeye domain-containing protein 3, Popeye protein 3, Popdc3, Pop3
Format	Liquid. Purified antibody supplied in 1x PBS buffer with 0.09% (w/v) sodium azide and 2% sucrose.
Reconstitution & Storage	Add 50 ul of distilled water. Final anti-Popdc3 antibody concentration is 1 mg/ml in PBS buffer with 2% sucrose. For longer periods of storage, store at 20°C. Avoid repeat freeze-thaw cycles.
Precautions	Popdc3 antibody - C-terminal region is for research use only and not for use in diagnostic or therapeutic procedures.

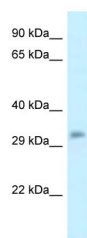
Protein Information

Name	Popdc3
Synonyms	Pop3
Function	May play a role in the maintenance of heart function mediated, at least in part, through cAMP-binding. May play a role in the regulation of KCNK2-mediated current amplitude (By similarity).
Cellular Location	Membrane; Multi-pass membrane protein
Tissue Location	Expressed in cardiac and skeletal muscle.

References

Andree B.,et al.Dev. Biol. 223:371-382(2000).
Carninci P.,et al.Science 309:1559-1563(2005).

Images



WB Suggested Anti-Popdc3 Antibody Titration: 1.0 µg/ml
Positive Control: Mouse Liver

Please note: All products are 'FOR RESEARCH USE ONLY. NOT FOR USE IN DIAGNOSTIC OR THERAPEUTIC PROCEDURES'.