

JPH3 antibody - N-terminal region

Rabbit Polyclonal Antibody

Catalog # AI13044

Product Information

Application	WB
Primary Accession	Q8WXH2
Other Accession	NM_020655 , NP_065706
Reactivity	Human, Mouse, Rat, Rabbit, Zebrafish, Pig, Dog, Guinea Pig, Horse, Bovine
Predicted	Human, Mouse, Rat, Pig, Chicken, Dog, Guinea Pig, Horse, Bovine
Host	Rabbit
Clonality	Polyclonal
Calculated MW	81469

Additional Information

Gene ID	57338
Alias Symbol	CAGL237, FLJ44707, HDL2, JP-3, JP3, TNRC22
Other Names	Junctophilin-3, JP-3, Junctophilin type 3, Trinucleotide repeat-containing gene 22 protein, JPH3, JP3, TNRC22
Format	Liquid. Purified antibody supplied in 1x PBS buffer with 0.09% (w/v) sodium azide and 2% sucrose.
Reconstitution & Storage	Add 50 ul of distilled water. Final anti-JPH3 antibody concentration is 1 mg/ml in PBS buffer with 2% sucrose. For longer periods of storage, store at 20°C. Avoid repeat freeze-thaw cycles.
Precautions	JPH3 antibody - N-terminal region is for research use only and not for use in diagnostic or therapeutic procedures.

Protein Information

Name	JPH3
Synonyms	JP3, TNRC22
Function	Junctophilins contribute to the formation of junctional membrane complexes (JMCs) which link the plasma membrane with the endoplasmic or sarcoplasmic reticulum in excitable cells. Provides a structural foundation for functional cross-talk between the cell surface and intracellular calcium release channels. JPH3 is brain- specific and appears to have an active role in certain neurons involved in motor coordination and memory.
Cellular Location	Cell membrane; Peripheral membrane protein. Endoplasmic reticulum

membrane; Single-pass type IV membrane protein. Note=Localized predominantly on the plasma membrane. The transmembrane domain is anchored in endoplasmic reticulum membrane, while the N-terminal part associates with the plasma membrane (By similarity).

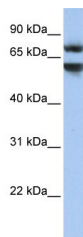
Tissue Location

Specifically expressed in brain.

References

Nishi M.,et al.Biochem. Biophys. Res. Commun. 273:920-927(2000).
Mural R.J.,et al.Submitted (SEP-2005) to the EMBL/GenBank/DDBJ databases.
Holmes S.E.,et al.Nat. Genet. 29:377-378(2001).
Stevanin G.,et al.Neurology 58:965-967(2002).
Walker R.H.,et al.Neurology 61:1002-1004(2003).

Images



WB Suggested Anti-JPH3 Antibody Titration: 0.2-1 µg/ml
Positive Control: HepG2 cell lysate

Please note: All products are 'FOR RESEARCH USE ONLY. NOT FOR USE IN DIAGNOSTIC OR THERAPEUTIC PROCEDURES'.