

JPH1 antibody - C-terminal region

Rabbit Polyclonal Antibody

Catalog # AI13042

Product Information

Application	WB
Primary Accession	Q9HDC5
Other Accession	NM_020647 , NP_065698
Reactivity	Human, Mouse, Rat, Rabbit, Zebrafish, Pig, Dog, Guinea Pig, Horse, Bovine
Predicted	Human, Mouse, Rat, Rabbit, Zebrafish, Pig, Dog, Guinea Pig, Horse, Bovine
Host	Rabbit
Clonality	Polyclonal
Calculated MW	71686

Additional Information

Gene ID	56704
Alias Symbol	DKFZp762L0313, JP-1, JP1
Other Names	Junctophilin-1, JP-1, Junctophilin type 1, JPH1, JP1
Format	Liquid. Purified antibody supplied in 1x PBS buffer with 0.09% (w/v) sodium azide and 2% sucrose.
Reconstitution & Storage	Add 50 ul of distilled water. Final anti-JPH1 antibody concentration is 1 mg/ml in PBS buffer with 2% sucrose. For longer periods of storage, store at 20°C. Avoid repeat freeze-thaw cycles.
Precautions	JPH1 antibody - C-terminal region is for research use only and not for use in diagnostic or therapeutic procedures.

Protein Information

Name	JPH1
Synonyms	JP1
Function	Junctophilins contribute to the formation of junctional membrane complexes (JMCs) which link the plasma membrane with the endoplasmic or sarcoplasmic reticulum in excitable cells. Provides a structural foundation for functional cross-talk between the cell surface and intracellular calcium release channels. JPH1 contributes to the construction of the skeletal muscle triad by linking the t-tubule (transverse-tubule) and SR (sarcoplasmic reticulum) membranes.
Cellular Location	Cell membrane; Peripheral membrane protein. Endoplasmic reticulum

membrane; Single-pass type IV membrane protein. Sarcoplasmic reticulum membrane; Single-pass type IV membrane protein. Note=Localized predominantly on the plasma membrane. The transmembrane domain is anchored in endoplasmic/sarcoplasmic reticulum membrane, while the N-terminal part associates with the plasma membrane. In skeletal muscle cells, it is predominantly localized at the junction of the A and I bands (By similarity).

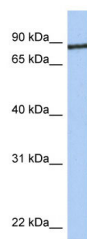
Tissue Location

Abundantly expressed in skeletal muscle. Very low levels in heart.

References

Nusbaum C.,et al.Nature 439:331-335(2006).
Mural R.J.,et al.Submitted (JUL-2005) to the EMBL/GenBank/DDBJ databases.
Nishi M.,et al.Biochem. Biophys. Res. Commun. 273:920-927(2000).
Olsen J.V.,et al.Cell 127:635-648(2006).
Dephoure N.,et al.Proc. Natl. Acad. Sci. U.S.A. 105:10762-10767(2008).

Images



WB Suggested Anti-JPH1 Antibody Titration: 0.2-1 µg/ml
Positive Control: Hela cell lysate

Please note: All products are 'FOR RESEARCH USE ONLY. NOT FOR USE IN DIAGNOSTIC OR THERAPEUTIC PROCEDURES'.