

GLYATL2 antibody - middle region

Rabbit Polyclonal Antibody
Catalog # AI12975

Product Information

Application	WB
Primary Accession	Q8WU03
Other Accession	NM_145016 , NP_659453
Reactivity	Human
Predicted	Human
Host	Rabbit
Clonality	Polyclonal
Calculated MW	34277

Additional Information

Gene ID	219970
Alias Symbol	BXMAS2-10, GATF-B, MGC24009
Other Names	Glycine N-acyltransferase-like protein 2, 2.3.1.13, Acyl-CoA:glycine N-acyltransferase-like protein 2, GLYATL2
Format	Liquid. Purified antibody supplied in 1x PBS buffer with 0.09% (w/v) sodium azide and 2% sucrose.
Reconstitution & Storage	Add 50 ul of distilled water. Final anti-GLYATL2 antibody concentration is 1 mg/ml in PBS buffer with 2% sucrose. For longer periods of storage, store at 20°C. Avoid repeat freeze-thaw cycles.
Precautions	GLYATL2 antibody - middle region is for research use only and not for use in diagnostic or therapeutic procedures.

Protein Information

Name	GLYATL2 (HGNC:24178)
Function	Mitochondrial acyltransferase which transfers the acyl group to the N-terminus of glycine (PubMed: 20305126 , PubMed: 22475485). Conjugates numerous substrates, such as arachidonoyl-CoA and saturated medium and long-chain acyl-CoAs ranging from chain-length C8:0-CoA to C18:0-CoA, to form a variety of N-acylglycines. Shows a preference for monounsaturated fatty acid oleoyl-CoA (C18:1-CoA) as an acyl donor. Does not exhibit any activity toward C22:6-CoA and chenodeoxycholoyl-CoA, nor toward serine or alanine (PubMed: 20305126).
Cellular Location	Endoplasmic reticulum

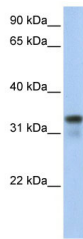
Tissue Location

Expressed at highest levels in salivary gland and trachea. Also detected in thyroid gland, spinal cord, prostate, lung and fetal brain.

References

Nakayama Y.,et al.Submitted (SEP-2001) to the EMBL/GenBank/DDBJ databases.
Matsuo M.,et al.Biochem. Biophys. Res. Commun. 420:901-906(2012).
Mural R.J.,et al.Submitted (JUL-2005) to the EMBL/GenBank/DDBJ databases.
Waluk D.P.,et al.FASEB J. 24:2795-2803(2010).
Waluk D.P.,et al.J. Biol. Chem. 287:16158-16167(2012).

Images



WB Suggested Anti-GLYATL2 Antibody Titration: 0.2-1
 $\mu\text{g/ml}$
Positive Control: 721_B cell lysate

Please note: All products are 'FOR RESEARCH USE ONLY. NOT FOR USE IN DIAGNOSTIC OR THERAPEUTIC PROCEDURES'.