

Cryab antibody - N-terminal region

Rabbit Polyclonal Antibody

Catalog # AI12889

Product Information

Application	WB
Primary Accession	P23928
Other Accession	NM_012935 , NP_037067
Reactivity	Human, Mouse, Rat, Rabbit, Pig, Dog, Guinea Pig, Horse, Bovine, Sheep
Predicted	Human, Mouse, Rat, Rabbit, Pig, Dog, Guinea Pig, Bovine, Sheep
Host	Rabbit
Clonality	Polyclonal
Calculated MW	20089

Additional Information

Gene ID	25420
Alias Symbol	AACRYA
Other Names	Alpha-crystallin B chain, Alpha(B)-crystallin, Cryab
Format	Liquid. Purified antibody supplied in 1x PBS buffer with 0.09% (w/v) sodium azide and 2% sucrose.
Reconstitution & Storage	Add 50 ul of distilled water. Final anti-Cryab antibody concentration is 1 mg/ml in PBS buffer with 2% sucrose. For longer periods of storage, store at 20°C. Avoid repeat freeze-thaw cycles.
Precautions	Cryab antibody - N-terminal region is for research use only and not for use in diagnostic or therapeutic procedures.

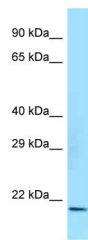
Protein Information

Name	Cryab {ECO:0000312 RGD:2414}
Function	May contribute to the transparency and refractive index of the lens. Has chaperone-like activity, preventing aggregation of various proteins under a wide range of stress conditions. In lens epithelial cells, stabilizes the ATP6V1A protein, preventing its degradation by the proteasome (By similarity).
Cellular Location	Cytoplasm {ECO:0000250 UniProtKB:P02511}. Nucleus {ECO:0000250 UniProtKB:P02511}. Secreted {ECO:0000250 UniProtKB:P02511}. Lysosome {ECO:0000250 UniProtKB:P23927}. Note=Translocates to the nucleus during heat shock and resides in sub-nuclear structures known as SC35 speckles or nuclear splicing speckles. Localizes at the Z-bands and the intercalated disk in

cardiomyocytes. Can be secreted; the secretion is dependent on protein unfolding and facilitated by the cargo receptor TMED10; it results in protein translocation from the cytoplasm into the ERGIC (endoplasmic reticulum-Golgi intermediate compartment) followed by vesicle entry and secretion. {ECO:0000250|UniProtKB:P02511}

Tissue Location Lens as well as other tissues.

Images



WB Suggested Anti-Cryab Antibody Titration: 1.0 µg/ml
Positive Control: Rat Brain

Please note: All products are 'FOR RESEARCH USE ONLY. NOT FOR USE IN DIAGNOSTIC OR THERAPEUTIC PROCEDURES'.