

THG1L antibody - middle region

Rabbit Polyclonal Antibody

Catalog # AI12849

Product Information

Application	WB
Primary Accession	Q9NWX6
Other Accession	NM_017872 , NP_060342
Reactivity	Human, Mouse, Rat, Rabbit, Zebrafish, Pig, Dog, Guinea Pig, Horse, Bovine, Yeast
Predicted Host	Human, Chicken, Dog, Guinea Pig
Clonality	Rabbit
Calculated MW	Polyclonal 34831

Additional Information

Gene ID	54974
Alias Symbol	FLJ11601, FLJ20546, ICF45
Other Names	Probable tRNA(His) guanylyltransferase, 2.7.7.79, Interphase cytoplasmic foci protein 45, tRNA-histidine guanylyltransferase, THG1L, ICF45
Format	Liquid. Purified antibody supplied in 1x PBS buffer with 0.09% (w/v) sodium azide and 2% sucrose.
Reconstitution & Storage	Add 50 ul of distilled water. Final anti-THG1L antibody concentration is 1 mg/ml in PBS buffer with 2% sucrose. For longer periods of storage, store at 20°C. Avoid repeat freeze-thaw cycles.
Precautions	THG1L antibody - middle region is for research use only and not for use in diagnostic or therapeutic procedures.

Protein Information

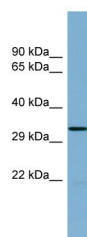
Name	THG1L
Synonyms	ICF45
Function	Adds a GMP to the 5'-end of tRNA(His) after transcription and RNase P cleavage. This step is essential for proper recognition of the tRNA and for the fidelity of protein synthesis (Probable). Also functions as a guanyl-nucleotide exchange factor/GEF for the MFN1 and MFN2 mitofusins thereby regulating mitochondrial fusion (PubMed: 25008184 , PubMed: 27307223). By regulating both mitochondrial dynamics and bioenergetic function, it contributes to cell survival following oxidative stress (PubMed: 25008184 , PubMed: 27307223).

Cellular Location	Cytoplasm. Mitochondrion outer membrane
Tissue Location	Expressed in many tissues.

References

Guo,D.,(2004)J.Biol.Chem.279(51),53498-53505ReconstitutionandStorage:Forshorttermuse,storeat2-8Cupto1 week.Forlongtermstorage,storeat-20Cinsmallaliquotstopreventfreeze-thawcycles.

Images



WB Suggested Anti-THG1L Antibody Titration: 0.2-1 µg/ml
 ELISA Titer: 1:312500
 Positive Control: Human Spleen

Please note: All products are 'FOR RESEARCH USE ONLY. NOT FOR USE IN DIAGNOSTIC OR THERAPEUTIC PROCEDURES'.