

Zkscan6 Antibody - C-terminal region

Rabbit Polyclonal Antibody

Catalog # AI12834

Product Information

Application	WB
Primary Accession	Q810A1
Other Accession	NM_026107 , NP_080383
Reactivity	Human, Mouse, Rat, Rabbit, Zebrafish, Pig, Dog, Horse, Bovine
Predicted	Human, Mouse, Rat, Rabbit, Zebrafish, Pig, Dog, Horse, Bovine
Host	Rabbit
Clonality	Polyclonal
Calculated MW	62929

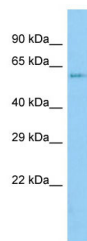
Additional Information

Gene ID	52712
Alias Symbol	1700128E15Rik, D11Ertd714e, KOX11, Zfp535, Znf18
Other Names	Zinc finger protein 18, Zinc finger protein 535, Zinc finger protein with KRAB and SCAN domains 6, Znf18, Zfp535, Zkscan6
Format	Liquid. Purified antibody supplied in 1x PBS buffer with 0.09% (w/v) sodium azide and 2% sucrose.
Reconstitution & Storage	Add 50 ul of distilled water. Final anti-Zkscan6 antibody concentration is 1 mg/ml in PBS buffer with 2% sucrose. For longer periods of storage, store at 20°C. Avoid repeat freeze-thaw cycles.
Precautions	Zkscan6 Antibody - C-terminal region is for research use only and not for use in diagnostic or therapeutic procedures.

Protein Information

Name	Znf18
Synonyms	Zfp535, Zkscan6
Function	May be involved in transcriptional regulation.
Cellular Location	Nucleus {ECO:0000255 PROSITE-ProRule:PRU00187}.

Images



Host: Rabbit
Target Name: Zkscan6
Sample Tissue: Mouse Stomach lysates
Antibody Dilution: 1.0µg/ml

Please note: All products are 'FOR RESEARCH USE ONLY. NOT FOR USE IN DIAGNOSTIC OR THERAPEUTIC PROCEDURES'.