

PCDH12 antibody - middle region

Rabbit Polyclonal Antibody

Catalog # AI12773

Product Information

Application	WB
Primary Accession	Q9NPG4
Other Accession	NM_016580 , NP_057664
Reactivity	Human, Rat, Pig, Dog, Guinea Pig, Horse, Bovine
Predicted	Human, Rat, Pig, Dog, Guinea Pig, Horse, Bovine
Host	Rabbit
Clonality	Polyclonal
Calculated MW	128995

Additional Information

Gene ID	51294
Alias Symbol	VE-cadherin-2, VECAD2
Other Names	Protocadherin-12, Vascular cadherin-2, Vascular endothelial cadherin-2, VE-cad-2, VE-cadherin-2, PCDH12
Format	Liquid. Purified antibody supplied in 1x PBS buffer with 0.09% (w/v) sodium azide and 2% sucrose.
Reconstitution & Storage	Add 50 ul of distilled water. Final anti-PCDH12 antibody concentration is 1 mg/ml in PBS buffer with 2% sucrose. For longer periods of storage, store at 20°C. Avoid repeat freeze-thaw cycles.
Precautions	PCDH12 antibody - middle region is for research use only and not for use in diagnostic or therapeutic procedures.

Protein Information

Name	PCDH12 (HGNC:8657)
Function	Cellular adhesion molecule that may play an important role in cell-cell interactions at interendothelial junctions (By similarity). Acts as a regulator of cell migration, probably via increasing cell-cell adhesion (PubMed: 21402705). Promotes homotypic calcium-dependent aggregation and adhesion and clusters at intercellular junctions (By similarity). Unable to bind to catenins, weakly associates with the cytoskeleton (By similarity).
Cellular Location	[Protocadherin-12]: Cell membrane; Single-pass type I membrane protein. Cell junction {ECO:0000250 UniProtKB:O55134}

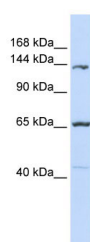
Tissue Location

Expressed in highly vascularized tissues including the heart and placenta, but most tissues contain a low level of expression (PubMed:11063261). Prominent expression in the spleen (PubMed:11063261). Present in villous and extravillous trophoblast (at protein level) (PubMed:21402705).

References

Clark, H.F., (2003) Genome Res. 13(10), 2265-2270 Reconstitution and Storage: For short term use, store at 2-8°C up to 1 week. For long term storage, store at -20°C in small aliquots to prevent freeze-thaw cycles.

Images



WB Suggested Anti-PCDH12 Antibody Titration: 0.2-1
µg/ml
ELISA Titer: 1:312500
Positive Control: MCF7 cell lysate

Please note: All products are 'FOR RESEARCH USE ONLY. NOT FOR USE IN DIAGNOSTIC OR THERAPEUTIC PROCEDURES'.