

GOLM1 antibody - N-terminal region

Rabbit Polyclonal Antibody

Catalog # AI12771

Product Information

Application	WB
Primary Accession	Q8NBJ4
Other Accession	NM_016548 , NP_057632
Reactivity	Human, Mouse, Rat, Rabbit, Pig, Dog, Guinea Pig, Horse, Bovine
Predicted	Human, Mouse, Rabbit, Pig, Dog, Guinea Pig, Horse, Bovine
Host	Rabbit
Clonality	Polyclonal
Calculated MW	45333

Additional Information

Gene ID	51280
Alias Symbol Other Names	C9orf155, FLJ22634, FLJ23608, GOLPH2, GP73, PSEC0257, bA379P1.3 Golgi membrane protein 1, Golgi membrane protein GP73, Golgi phosphoprotein 2, GOLM1, C9orf155, GOLPH2
Format	Liquid. Purified antibody supplied in 1x PBS buffer with 0.09% (w/v) sodium azide and 2% sucrose.
Reconstitution & Storage	Add 50 ul of distilled water. Final anti-GOLM1 antibody concentration is 1 mg/ml in PBS buffer with 2% sucrose. For longer periods of storage, store at 20°C. Avoid repeat freeze-thaw cycles.
Precautions	GOLM1 antibody - N-terminal region is for research use only and not for use in diagnostic or therapeutic procedures.

Protein Information

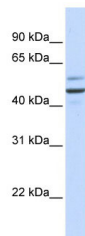
Name	GOLM1
Synonyms	C9orf155, GOLPH2
Function	Unknown. Cellular response protein to viral infection.
Cellular Location	Golgi apparatus, cis-Golgi network membrane; Single-pass type II membrane protein. Note=Early Golgi. Cycles via the cell surface and endosomes upon luminal pH disruption
Tissue Location	Widely expressed. Highly expressed in colon, prostate, trachea and stomach. Expressed at lower level in testis, muscle, lymphoid tissues, white blood cells

and spleen. Predominantly expressed by cells of the epithelial lineage. Expressed at low level in normal liver. Expression significantly increases in virus (HBV, HCV) infected liver. Expression does not increase in liver disease due to non-viral causes (alcohol-induced liver disease, autoimmune hepatitis) Increased expression in hepatocytes appears to be a general feature of advanced liver disease. In liver tissue from patients with adult giant- cell hepatitis (GCH), it is strongly expressed in hepatocytes-derived syncytial giant cells. Constitutively expressed by biliary epithelial cells but not by hepatocytes.

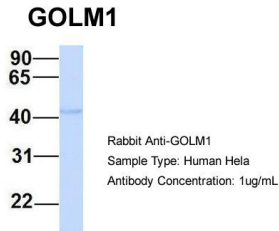
References

Bachert,C.,(2007)Traffic8(10),1415-1423ReconstitutionandStorage:Forshorttermuse,storeat2-8Cupto1week.F orlongtermstorage,storeat-20Cinsmallaliquotstopreventfreeze-thawcycles.

Images



WB Suggested Anti-GOLM1 Antibody Titration: 0.2-1
 $\mu\text{g/ml}$
 ELISA Titer: 1:312500
 Positive Control: Human brain



Host:Rabbit
 Target Name:GOLM1
 Sample Tissue:Human Hela
 Antibody Dilution: 1.0 $\mu\text{g/ml}$ GOLM1 is supported by
 BioGPS gene expression data to be expressed in HeLa

Please note: All products are 'FOR RESEARCH USE ONLY. NOT FOR USE IN DIAGNOSTIC OR THERAPEUTIC PROCEDURES'.