

ZDHHC17 antibody - middle region

Rabbit Polyclonal Antibody

Catalog # AI12748

Product Information

Application	WB, IHC
Primary Accession	Q8IUH5
Other Accession	NM_015336 , NP_056151
Reactivity	Human, Mouse, Rat, Rabbit, Zebrafish, Pig, Dog, Guinea Pig, Horse, Bovine
Predicted	Mouse, Rat, Rabbit, Zebrafish, Pig, Chicken, Dog, Guinea Pig, Horse, Bovine
Host	Rabbit
Clonality	Polyclonal
Calculated MW	72640

Additional Information

Gene ID	23390
Alias Symbol Other Names	HIP14, HIP3, HSPC294, HYPH, KIAA0946 Palmitoyltransferase ZDHHC17, 2.3.1.225, Huntingtin yeast partner H, Huntingtin-interacting protein 14, HIP-14, Huntingtin-interacting protein 3, HIP-3, Huntingtin-interacting protein H, Putative MAPK-activating protein PM11, Putative NF-kappa-B-activating protein 205, Zinc finger DHHC domain-containing protein 17, DHHC-17, ZDHHC17, HIP14, HIP3, HYPH, KIAA0946
Format	Liquid. Purified antibody supplied in 1x PBS buffer with 0.09% (w/v) sodium azide and 2% sucrose.
Reconstitution & Storage	Add 50 ul of distilled water. Final anti-ZDHHC17 antibody concentration is 1 mg/ml in PBS buffer with 2% sucrose. For longer periods of storage, store at 20°C. Avoid repeat freeze-thaw cycles.
Precautions	ZDHHC17 antibody - middle region is for research use only and not for use in diagnostic or therapeutic procedures.

Protein Information

Name	ZDHHC17 (HGNC:18412)
Function	Palmitoyltransferase that catalyzes the addition of palmitate onto various protein substrates and is involved in a variety of cellular processes (PubMed: 15489887 , PubMed: 15603740 , PubMed: 24705354 , PubMed: 27911442 , PubMed: 28757145). Has no stringent fatty acid selectivity and in addition to palmitate can also transfer onto target proteins myristate from tetradecanoyl-CoA and stearate from octadecanoyl-CoA (By similarity).

Palmitoyltransferase specific for a subset of neuronal proteins, including SNAP25, DLG4/PSD95, GAD2, SYT1 and HTT (PubMed:[15489887](#), PubMed:[15603740](#), PubMed:[19139280](#), PubMed:[28757145](#)). Also palmitoylates neuronal protein GPM6A as well as SPRED1 and SPRED3 (PubMed:[24705354](#)). Could also play a role in axonogenesis through the regulation of NTRK1 and the downstream ERK1/ERK2 signaling cascade (By similarity). May be involved in the sorting or targeting of critical proteins involved in the initiating events of endocytosis at the plasma membrane (PubMed:[12393793](#)). May play a role in Mg(2+) transport (PubMed:[18794299](#)). Could also palmitoylate DNAJC5 and regulate its localization to the Golgi membrane (By similarity). Palmitoylates CASP6, thereby preventing its dimerization and subsequent activation (PubMed:[27911442](#)).

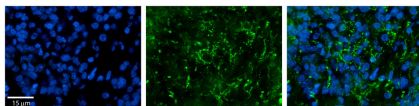
Cellular Location

Golgi apparatus membrane; Multi-pass membrane protein. Cytoplasmic vesicle membrane; Multi-pass membrane protein. Presynaptic cell membrane; Multi-pass membrane protein. Note=Low extracellular Mg(2+) induces increase in Golgi and in post-Golgi membrane vesicles

Tissue Location

Expressed in all brain regions. Expression is highest in the cortex, cerebellum, occipital lobe and caudate and lowest in the spinal cord. Expression is also seen in testis, pancreas, heart and kidney.

Images

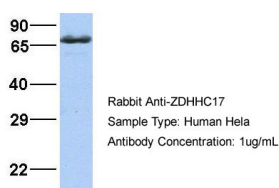


Rabbit Anti-ZDHHC17 Antibody
Formalin Fixed Paraffin Embedded Tissue: Human Pineal
Tissue Observed Staining: Cytoplasmic in vesicles and processes of pinealocytes
Primary Antibody
Concentration: 1:100
Secondary Antibody: Donkey anti-Rabbit-Cy3
Secondary Antibody
Concentration: 1:200
Magnification: 20X
Exposure Time: 0.5 - 2.0 sec



WB Suggested Anti-ZDHHC17 Antibody Titration: 0.2-1 µg/ml
Positive Control: HeLa cell lysate
ZDHHC17 is supported by BioGPS gene expression data to be expressed in HeLa

ZDHHC17



Host: Rabbit
Target Name: ZDHHC17
Sample Tissue: HeLa
Antibody Dilution: 1.0µg/ml
ZDHHC17 is supported by BioGPS gene expression data to be expressed in HeLa