

ATP1B4 antibody - middle region

Rabbit Polyclonal Antibody

Catalog # AI12722

Product Information

Application	WB
Primary Accession	Q9UN42
Other Accession	NM_012069 , NP_036201
Reactivity	Human, Mouse, Rat, Rabbit, Dog, Guinea Pig, Horse, Bovine
Predicted	Human, Mouse, Rat, Rabbit, Chicken, Dog, Guinea Pig
Host	Rabbit
Clonality	Polyclonal
Calculated MW	41598

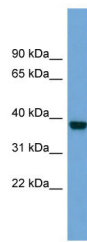
Additional Information

Gene ID	23439
Other Names	Protein ATP1B4, X, K-ATPase subunit beta-m, X/potassium-transporting ATPase subunit beta-m, ATP1B4
Format	Liquid. Purified antibody supplied in 1x PBS buffer with 0.09% (w/v) sodium azide and 2% sucrose.
Reconstitution & Storage	Add 50 ul of distilled water. Final anti-ATP1B4 antibody concentration is 1 mg/ml in PBS buffer with 2% sucrose. For longer periods of storage, store at 20°C. Avoid repeat freeze-thaw cycles.
Precautions	ATP1B4 antibody - middle region is for research use only and not for use in diagnostic or therapeutic procedures.

Protein Information

Name	ATP1B4
Function	May act as a transcriptional coregulator during muscle development through its interaction with SNW1. Has lost its ancestral function as a Na,K-ATPase beta-subunit.
Cellular Location	Nucleus inner membrane; Single-pass type II membrane protein. Note=Detected in nuclear envelopes.
Tissue Location	Highly expressed in skeletal muscle and at a lower level in heart.

Images



WB Suggested Anti-ATP1B4 Antibody Titration: 0.2-1
 $\mu\text{g/ml}$
Positive Control: COLO205 cell lysate

Please note: All products are 'FOR RESEARCH USE ONLY. NOT FOR USE IN DIAGNOSTIC OR THERAPEUTIC PROCEDURES'.