

TMEM115 antibody - N-terminal region

Rabbit Polyclonal Antibody
Catalog # AI12716

Product Information

Application	WB
Primary Accession	Q12893
Other Accession	NM_007024 , NP_008955
Reactivity	Human, Mouse, Rat, Rabbit, Zebrafish, Pig, Dog, Guinea Pig, Bovine
Predicted	Mouse, Rat, Rabbit, Zebrafish, Dog
Host	Rabbit
Clonality	Polyclonal
Calculated MW	38197

Additional Information

Gene ID	11070
Alias Symbol	PL6
Other Names	Transmembrane protein 115, Placental protein 6, Protein PL6, TMEM115 (HGNC:30055)
Format	Liquid. Purified antibody supplied in 1x PBS buffer with 0.09% (w/v) sodium azide and 2% sucrose.
Reconstitution & Storage	Add 50 ul of distilled water. Final anti-TMEM115 antibody concentration is 1 mg/ml in PBS buffer with 2% sucrose. For longer periods of storage, store at 20°C. Avoid repeat freeze-thaw cycles.
Precautions	TMEM115 antibody - N-terminal region is for research use only and not for use in diagnostic or therapeutic procedures.

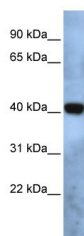
Protein Information

Name	TMEM115 (HGNC:30055)
Function	May play a role in retrograde transport of proteins from the Golgi to the endoplasmic reticulum. May indirectly play a role in protein glycosylation in the Golgi.
Cellular Location	Golgi apparatus, Golgi stack membrane; Multi-pass membrane protein
Tissue Location	Expressed strongly in kidney and skeletal muscle, followed by liver, placenta, pancreas, and lung, with low amounts in heart and only traces in brain (PubMed:11085536). Widely expressed with ubiquitous expression in epithelial tissues (at protein level) (PubMed:17973242).

References

Muzny, D.M., (2006) Nature 440(7088), 1194-1198 Reconstitution and Storage: For short term use, store at 2-8°C up to 1 week. For long term storage, store at -20°C in small aliquots to prevent freeze-thaw cycles.

Images



WB Suggested Anti-TMEM115 Antibody Titration: 0.2-1
µg/ml
ELISA Titer: 1:1562500
Positive Control: Human brain

Please note: All products are 'FOR RESEARCH USE ONLY. NOT FOR USE IN DIAGNOSTIC OR THERAPEUTIC PROCEDURES'.