

IFI44 antibody - middle region

Rabbit Polyclonal Antibody

Catalog # AI12661

Product Information

Application	WB
Primary Accession	Q8TCB0
Other Accession	NM_006417 , NP_006408
Reactivity	Human
Predicted	Human
Host	Rabbit
Clonality	Polyclonal
Calculated MW	50491

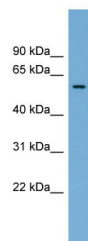
Additional Information

Gene ID	10561
Alias Symbol Other Names	MTAP44, p44 Interferon-induced protein 44, p44, Microtubule-associated protein 44, IFI44, MTAP44
Format	Liquid. Purified antibody supplied in 1x PBS buffer with 0.09% (w/v) sodium azide and 2% sucrose.
Reconstitution & Storage	Add 50 ul of distilled water. Final anti-IFI44 antibody concentration is 1 mg/ml in PBS buffer with 2% sucrose. For longer periods of storage, store at 20°C. Avoid repeat freeze-thaw cycles.
Precautions	IFI44 antibody - middle region is for research use only and not for use in diagnostic or therapeutic procedures.

Protein Information

Name	IFI44
Synonyms	MTAP44
Function	This protein aggregates to form microtubular structures.
Cellular Location	Cytoplasm.

Images



WB Suggested Anti-IFI44 Antibody Titration: 0.2-1 $\mu\text{g/ml}$
ELISA Titer: 1:62500
Positive Control: THP-1 cell lysate

Please note: All products are 'FOR RESEARCH USE ONLY. NOT FOR USE IN DIAGNOSTIC OR THERAPEUTIC PROCEDURES'.