

IFIT3 antibody - N-terminal region

Rabbit Polyclonal Antibody

Catalog # AI12645

Product Information

Application	WB, IHC
Primary Accession	O14879
Other Accession	NM_001031683 , NP_001026853
Reactivity	Human, Mouse, Rat, Rabbit, Pig, Bovine
Predicted	Human, Mouse, Rat, Rabbit, Pig, Bovine
Host	Rabbit
Clonality	Polyclonal
Calculated MW	55985

Additional Information

Gene ID	3437
Alias Symbol Other Names	CIG-49, GARG-49, IFI60, IFIT4, IRG2, ISG60, RIG-G Interferon-induced protein with tetratricopeptide repeats 3, IFIT-3, CIG49, ISG-60, Interferon-induced 60 kDa protein, IFI-60K, Interferon-induced protein with tetratricopeptide repeats 4, IFIT-4, Retinoic acid-induced gene G protein, P60, RIG-G, IFIT3, CIG-49, IFI60, IFIT4, ISG60
Format	Liquid. Purified antibody supplied in 1x PBS buffer with 0.09% (w/v) sodium azide and 2% sucrose.
Reconstitution & Storage	Add 50 ul of distilled water. Final anti-IFIT3 antibody concentration is 1 mg/ml in PBS buffer with 2% sucrose. For longer periods of storage, store at 20°C. Avoid repeat freeze-thaw cycles.
Precautions	IFIT3 antibody - N-terminal region is for research use only and not for use in diagnostic or therapeutic procedures.

Protein Information

Name	IFIT3
Synonyms	CIG-49, IFI60, IFIT4, ISG60
Function	IFN-induced antiviral protein which acts as an inhibitor of cellular as well as viral processes, cell migration, proliferation, signaling, and viral replication. Enhances MAVS-mediated host antiviral responses by serving as an adapter bridging TBK1 to MAVS which leads to the activation of TBK1 and phosphorylation of IRF3 and phosphorylated IRF3 translocates into nucleus to promote antiviral gene transcription. Exhibits an antiproliferative activity via

the up-regulation of cell cycle negative regulators CDKN1A/p21 and CDKN1B/p27. Normally, CDKN1B/p27 turnover is regulated by COPS5, which binds CDKN1B/p27 in the nucleus and exports it to the cytoplasm for ubiquitin-dependent degradation. IFIT3 sequesters COPS5 in the cytoplasm, thereby increasing nuclear CDKN1B/p27 protein levels. Up-regulates CDKN1A/p21 by down-regulating MYC, a repressor of CDKN1A/p21. Can negatively regulate the apoptotic effects of IFIT2.

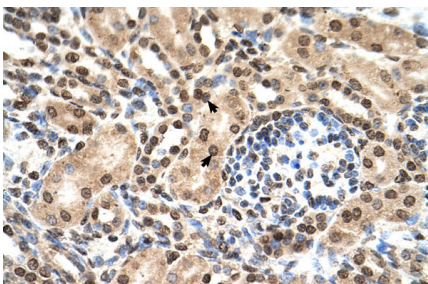
Cellular Location

Cytoplasm. Mitochondrion

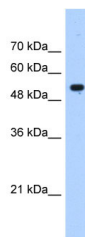
Tissue Location

Expression significantly higher in peripheral blood mononuclear cells (PBMCs) and monocytes from systemic lupus erythematosus (SLE) patients than in those from healthy individuals (at protein level). Spleen, lung, leukocytes, lymph nodes, placenta, bone marrow and fetal liver.

Images



Human kidney



WB Suggested Anti-IFIT3 Antibody Titration: 0.25µg/ml
Positive Control: HepG2 cell lysate

Please note: All products are 'FOR RESEARCH USE ONLY. NOT FOR USE IN DIAGNOSTIC OR THERAPEUTIC PROCEDURES'.