

B3galt2 antibody - C-terminal region

Rabbit Polyclonal Antibody
Catalog # AI12586

Product Information

Application	WB, IHC
Primary Accession	O54905
Other Accession	NM_020025 , NP_064409
Reactivity	Human, Mouse, Rat, Rabbit, Zebrafish, Pig, Goat, Dog, Guinea Pig, Horse, Bovine, Sheep
Predicted Host	Rat, Rabbit, Zebrafish, Chicken, Goat, Dog, Horse, Bovine, Sheep
Clonality	Polyclonal
Calculated MW	49095

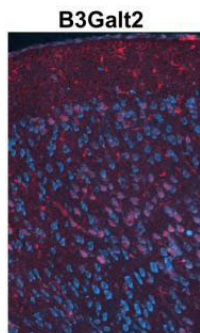
Additional Information

Gene ID	26878
Other Names	Beta-1, 3-galactosyltransferase 2, Beta-1, 3-GalTase 2, Beta3Gal-T2, Beta3GalT2, 2.4.1.-, UDP-Gal:betaGlcNAc beta 1, 3-galactosyltransferase-II, B3galt2
Format	Liquid. Purified antibody supplied in 1x PBS buffer with 0.09% (w/v) sodium azide and 2% sucrose.
Reconstitution & Storage	Add 50 ul of distilled water. Final anti-B3galt2 antibody concentration is 1 mg/ml in PBS buffer with 2% sucrose. For longer periods of storage, store at 20°C. Avoid repeat freeze-thaw cycles.
Precautions	B3galt2 antibody - C-terminal region is for research use only and not for use in diagnostic or therapeutic procedures.

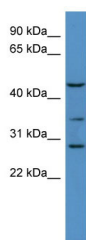
Protein Information

Name	B3galt2 {ECO:0000312 MGI:MGI:1349461}
Function	Beta-1,3-galactosyltransferase that transfers galactose from UDP-galactose to substrates with a terminal beta-N-acetylglucosamine (beta-GlcNAc) residue. Can also utilize substrates with a terminal galactose residue, albeit with lower efficiency. Involved in the biosynthesis of the carbohydrate moieties of glycolipids and glycoproteins.
Cellular Location	Golgi apparatus membrane; Single-pass type II membrane protein
Tissue Location	Detected in brain and heart.

Images



Red: B3Galt2 Cyan: Nissl (Neurons)
See IHC 1 Data and Customer Feedback for more Information



Sample Type : Adult mouse cortex
Primary Antibody Dilution : 1:500
Secondary Antibody : Anti-rabbit-Cy3 Secondary Antibody Dilution : 1:1000 Color/Signal Descriptions : Red: B3Galt2 Cyan: Nissl(Neurons)
Gene Name : B3galt2 Submitted by : Joshua R. Sanes, Molecular and Cellular Biology, Harvard University, 52 Oxford Street, Room 335, Cambridge MA 02138, Phone: 617-496-8683, FAX: 617-495-0524, email: sanesj@mcb.harvard.edu

WB Suggested Anti-B3galt2 Antibody Titration: 0.2-1 $\mu\text{g/ml}$
ELISA Titer: 1:12500
Positive Control: Mouse Brain

Please note: All products are 'FOR RESEARCH USE ONLY. NOT FOR USE IN DIAGNOSTIC OR THERAPEUTIC PROCEDURES'.