

MTX1 antibody - C-terminal region

Rabbit Polyclonal Antibody
Catalog # AI12563

Product Information

Application	WB
Primary Accession	Q13505
Other Accession	NM_002455 , NP_002446
Reactivity	Human, Mouse, Rat, Rabbit, Zebrafish, Dog, Guinea Pig, Horse, Bovine
Predicted	Human, Mouse, Rat, Rabbit, Zebrafish, Pig, Dog, Guinea Pig, Horse, Bovine
Host	Rabbit
Clonality	Polyclonal
Calculated MW	51 KDa

Additional Information

Alias Symbol	MTX, MTXN
Other Names	Metaxin-1, Mitochondrial outer membrane import complex protein 1, MTX1, MTX, MTXN
Format	Liquid. Purified antibody supplied in 1x PBS buffer with 0.09% (w/v) sodium azide and 2% sucrose.
Reconstitution & Storage	Add 50 ul of distilled water. Final anti-MTX1 antibody concentration is 1 mg/ml in PBS buffer with 2% sucrose. For longer periods of storage, store at 20°C. Avoid repeat freeze-thaw cycles.
Precautions	MTX1 antibody - C-terminal region is for research use only and not for use in diagnostic or therapeutic procedures.

Protein Information

References

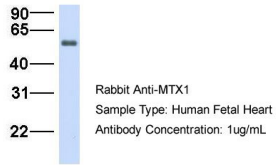
Xie,J.,(2007)FEBSLett.581(18),3545-3549ReconstitutionandStorage:Forshorttermuse,storeat2-8Cupto1week.F
orlongtermstorage,storeat-20Cinsmallaliquotstopreventfreeze-thawcycles.

Images

WB Suggested Anti-MTX1 Antibody Titration: 0.2-1 µg/ml
ELISA Titer: 1:62500
Positive Control: Human brain

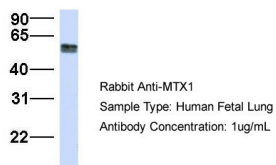


MTX1



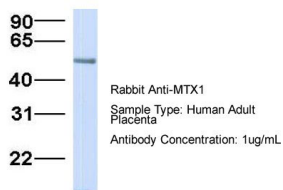
Host: Rabbit
 Target Name: MTX1
 Sample Tissue: Human Fetal Heart
 Antibody Dilution: 1.0µg/ml

MTX1



Host: Rabbit
 Target Name: MTX1
 Sample Tissue: Human Fetal Lung
 Antibody Dilution: 1.0µg/ml

MTX1



Host: Rabbit
 Target Name: MTX1
 Sample Tissue: Human Adult Placenta
 Antibody Dilution: 1.0µg/ml

Please note: All products are 'FOR RESEARCH USE ONLY. NOT FOR USE IN DIAGNOSTIC OR THERAPEUTIC PROCEDURES'.