

BTN1A1 antibody - N-terminal region

Rabbit Polyclonal Antibody

Catalog # AI12547

Product Information

Application	WB
Primary Accession	Q13410
Other Accession	NM_001732 , NP_001723
Reactivity	Human, Rat, Dog, Horse
Predicted	Human, Dog, Horse
Host	Rabbit
Clonality	Polyclonal
Calculated MW	58960

Additional Information

Gene ID	696
Alias Symbol	BT, BTN
Other Names	Butyrophilin subfamily 1 member A1, BT, BTN1A1, BTN
Format	Liquid. Purified antibody supplied in 1x PBS buffer with 0.09% (w/v) sodium azide and 2% sucrose.
Reconstitution & Storage	Add 50 ul of distilled water. Final anti-BTN1A1 antibody concentration is 1 mg/ml in PBS buffer with 2% sucrose. For longer periods of storage, store at 20°C. Avoid repeat freeze-thaw cycles.
Precautions	BTN1A1 antibody - N-terminal region is for research use only and not for use in diagnostic or therapeutic procedures.

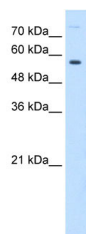
Protein Information

Name	BTN1A1
Synonyms	BTN
Function	May function in the secretion of milk-fat droplets. May act as a specific membrane-associated receptor for the association of cytoplasmic droplets with the apical plasma membrane (By similarity). Inhibits the proliferation of CD4 and CD8 T-cells activated by anti-CD3 antibodies, T-cell metabolism and IL2 and IFNG secretion (By similarity).
Cellular Location	Membrane; Single-pass type I membrane protein. Secreted

References

McManaman, J. L., J. Physiol. (Lond.) 545 (PT2), 567-579 (2002) Reconstitution and Storage: For short term use, store at 2-8°C up to 1 week. For long term storage, store at -20°C in small aliquots to prevent freeze-thaw cycles.

Images



WB Suggested Anti-BTN1A1 Antibody Titration: 0.2-1
µg/ml
Positive Control: HepG2 cell lysate

Please note: All products are 'FOR RESEARCH USE ONLY. NOT FOR USE IN DIAGNOSTIC OR THERAPEUTIC PROCEDURES'.