

Yipf5 antibody - N-terminal region

Rabbit Polyclonal Antibody

Catalog # AI12491

Product Information

Application	WB
Primary Accession	Q9WUU7
Other Accession	NM_022325 , NP_071720
Reactivity	Human, Mouse, Rat, Rabbit, Zebrafish, Pig, Dog, Guinea Pig, Horse, Bovine, Yeast
Predicted Host	Human, Mouse, Rat, Rabbit, Zebrafish, Pig, Chicken, Dog
Clonality	Rabbit
Calculated MW	Polyclonal 33996

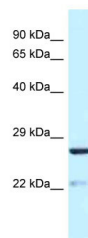
Additional Information

Gene ID	64138
Alias Symbol	2610311I19Rik, AA408236, Yip1a
Other Names	Cathepsin Z, 3.4.18.1, Ctsz
Format	Liquid. Purified antibody supplied in 1x PBS buffer with 0.09% (w/v) sodium azide and 2% sucrose.
Reconstitution & Storage	Add 50 ul of distilled water. Final anti-Yipf5 antibody concentration is 1 mg/ml in PBS buffer with 2% sucrose. For longer periods of storage, store at 20°C. Avoid repeat freeze-thaw cycles.
Precautions	Yipf5 antibody - N-terminal region is for research use only and not for use in diagnostic or therapeutic procedures.

Protein Information

Name	Ctsz
Function	Exhibits carboxy-monopeptidase as well as carboxy-dipeptidase activity (By similarity). Capable of producing kinin potentiating peptides (By similarity).
Cellular Location	Lysosome.
Tissue Location	Ubiquitous.

Images



WB Suggested Anti-Yipf5 Antibody Titration: 1.0 µg/ml
Positive Control: Mouse spleen

Please note: All products are 'FOR RESEARCH USE ONLY. NOT FOR USE IN DIAGNOSTIC OR THERAPEUTIC PROCEDURES'.