

# TMCC1 antibody - middle region

Rabbit Polyclonal Antibody

Catalog # AI12482

## Product Information

Application	WB
Primary Accession	<a href="#">Q6N039</a>
Other Accession	<a href="#">NM_015008</a> , <a href="#">NP_055823</a>
Reactivity	Human, Mouse, Rat, Rabbit, Zebrafish, Pig, Dog, Guinea Pig, Horse, Bovine
Predicted	Human, Mouse, Rat, Rabbit, Pig, Chicken, Dog, Guinea Pig, Horse
Host	Rabbit
Clonality	Polyclonal
Calculated MW	36 kDa

## Additional Information

Alias Symbol	DKFZp686M0169, FLJ42680
Format	Liquid. Purified antibody supplied in 1x PBS buffer with 0.09% (w/v) sodium azide and 2% sucrose.
Reconstitution & Storage	Add 50 ul of distilled water. Final anti-TMCC1 antibody concentration is 1 mg/ml in PBS buffer with 2% sucrose. For longer periods of storage, store at 20°C. Avoid repeat freeze-thaw cycles.
Precautions	TMCC1 antibody - middle region is for research use only and not for use in diagnostic or therapeutic procedures.

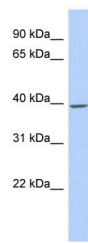
## Protein Information

## References

Olsen, J.V., (2006) Cell 127(3), 635-648 Reconstitution and Storage: For short term use, store at 2-8°C up to 1 week. For long term storage, store at -20°C in small aliquots to prevent freeze-thaw cycles.

## Images

WB Suggested Anti-TMCC1 Antibody Titration: 0.2-1 µg/ml  
ELISA Titer: 1:62500  
Positive Control: COLO205 cell lysate  
TMCC1 is strongly supported by BioGPS gene expression data to be expressed in Human COLO205 cells



Please note: All products are 'FOR RESEARCH USE ONLY. NOT FOR USE IN DIAGNOSTIC OR THERAPEUTIC PROCEDURES'.