

GPNMB antibody - N-terminal region

Rabbit Polyclonal Antibody

Catalog # AI12434

Product Information

Application	WB, IHC
Primary Accession	Q14956
Other Accession	NM_002510 , NP_002501
Reactivity	Human, Mouse, Rat, Rabbit, Pig, Dog, Guinea Pig, Horse, Bovine
Predicted	Human, Mouse, Rat, Rabbit, Pig, Dog, Guinea Pig, Horse, Bovine
Host	Rabbit
Clonality	Polyclonal
Calculated MW	63923

Additional Information

Gene ID	10457
Alias Symbol	HGFIN, NMB
Other Names	Transmembrane glycoprotein NMB, Transmembrane glycoprotein HGFIN, GPNMB, HGFIN, NMB
Target/Specificity	100% homologous to both isoforms of hGPNMB
Format	Liquid. Purified antibody supplied in 1x PBS buffer with 0.09% (w/v) sodium azide and 2% sucrose.
Reconstitution & Storage	Add 50 ul of distilled water. Final anti-GPNMB antibody concentration is 1 mg/ml in PBS buffer with 2% sucrose. For longer periods of storage, store at 20°C. Avoid repeat freeze-thaw cycles.
Precautions	GPNMB antibody - N-terminal region is for research use only and not for use in diagnostic or therapeutic procedures.

Protein Information

Name	GPNMB
Synonyms	HGFIN {ECO:0000303 PubMed:12609765}, NMB
Function	Could be a melanogenic enzyme.
Cellular Location	Cell membrane; Single-pass type I membrane protein Melanosome membrane; Single-pass type I membrane protein. Early endosome membrane; Single-pass type I membrane protein. Note=Identified by mass spectrometry in melanosome fractions from stage I to stage IV

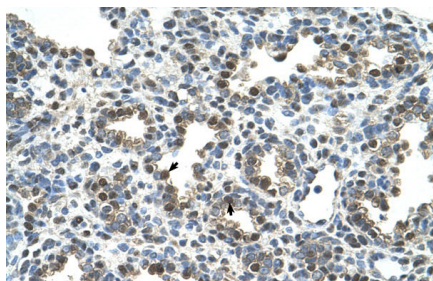
Tissue Location

Widely expressed, but very low expression, if any, in the brain (PubMed:12609765, PubMed:16609006). Expressed in the epidermis with higher levels in melanocytes compared with keratinocytes and Langerhans cells (at protein level) (PubMed:29336782). Expressed in peripheral blood, but not bone marrow mononuclear cells (PubMed:12609765). Expressed in tissue macrophages, including liver Kupffer cells and lung alveolar macrophages, in podocytes and in some cells of the ciliary body of the eye (at protein level) (PubMed:16489096). May be overexpressed in various cancers, including melanoma and glioblastoma multiforme (PubMed:16489096, PubMed:16609006, PubMed:7814155).

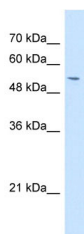
References

Oh,J.H.,(2005)Mamm.Genome16(12),942-954ReconstitutionandStorage:Forshorttermuse,storeat2-8Cupto1week.Forlongtermstorage,storeat-20Cinsmallaliquotstopreventfreeze-thawcycles.

Images



Human Lung



WB Suggested Anti-GPNMB Antibody Titration: 1 µg/ml
Positive Control: HepG2 cell lysate

Citations

- [Expression pattern and prognostic impact of glycoprotein non-metastatic B \(GPNMB\) in triple-negative breast cancer](#)

Please note: All products are 'FOR RESEARCH USE ONLY. NOT FOR USE IN DIAGNOSTIC OR THERAPEUTIC PROCEDURES'.