

FCRL6 antibody - middle region

Rabbit Polyclonal Antibody

Catalog # AI12431

Product Information

Application	WB
Primary Accession	Q6DN72
Other Accession	NM_001004310 , NP_001004310
Reactivity	Human
Predicted	Human
Host	Rabbit
Clonality	Polyclonal
Calculated MW	47748

Additional Information

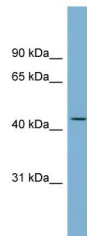
Gene ID	343413
Alias Symbol	FLJ16056, FcRH6
Other Names	Fc receptor-like protein 6, FcR-like protein 6, FCRL6, Fc receptor homolog 6, FcRH6, IFGP6, FCRL6, FCRH6
Format	Liquid. Purified antibody supplied in 1x PBS buffer with 0.09% (w/v) sodium azide and 2% sucrose.
Reconstitution & Storage	Add 50 ul of distilled water. Final anti-FCRL6 antibody concentration is 1 mg/ml in PBS buffer with 2% sucrose. For longer periods of storage, store at 20°C. Avoid repeat freeze-thaw cycles.
Precautions	FCRL6 antibody - middle region is for research use only and not for use in diagnostic or therapeutic procedures.

Protein Information

Name	FCRL6
Synonyms	FCRH6
Function	Acts as a MHC class II receptor (PubMed: 20519654). When stimulated on its own, does not play a role in cytokine production or the release of cytotoxic granules by NK cells and cytotoxic CD8(+) T cells (PubMed: 17213291 , PubMed: 18991291). Does not act as an Fc receptor (PubMed: 18991291).
Cellular Location	Cell membrane; Single-pass type I membrane protein
Tissue Location	Expressed by cytolytic cells including NK cells, effector and effector-memory

CD8(+) T-cells, and a subset of NKT cells (at protein level) (PubMed:17213291, PubMed:18991291, PubMed:20933011) Also expressed in gamma delta T cells and in a rare subset of effector CD4(+) T-cells (at protein level) (PubMed:18991291). Expressed in spleen, skin, peripheral blood leukocytes, liver, lung, bone marrow, small intestine and placenta (PubMed:20933011). Expression among T- cells is greatly expanded in HIV-1 infected individuals, and includes not only effector and effector-memory CD8(+) T-cells but also populations of CD4(+) T-cells (PubMed:17213291, PubMed:20933011) Expression among CD8(+) T-cells and NK cells is expanded in individuals with chronic lymphocytic leukemia (CLL) but is reduced in PBMCs from patients with acute (AML), chronic myeloid leukemia (CML) and non- Hodgkin's lymphoma (PubMed:18991291, PubMed:20933011). Expression is higher in PBMCs and/or CD3(+) cells of patients with autoimmune diseases, such as rheumatoid arthritis (RA), systemic lupus erythematosus (SLE) and idiopathic thrombocytopenia purpura (ITP) (PubMed:20933011). In contrast, expression in CD3(+) cells from patients with lupus anticoagulans (LA) is higher (PubMed:20933011)

Images



WB Suggested Anti-FCRL6 Antibody Titration: 0.2-1 µg/ml
Positive Control: OVCAR-3 cell lysate

Please note: All products are 'FOR RESEARCH USE ONLY. NOT FOR USE IN DIAGNOSTIC OR THERAPEUTIC PROCEDURES'.