

Tyrp1 antibody - C-terminal region

Rabbit Polyclonal Antibody

Catalog # AI12406

Product Information

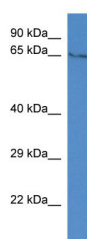
Application	WB
Primary Accession	D3ZH71
Other Accession	NM_001106664 , NP_001100134
Reactivity	Human, Mouse, Rat, Rabbit, Zebrafish, Pig, Goat, Dog, Guinea Pig, Horse, Bovine, Sheep
Predicted	Human, Mouse, Rat, Rabbit, Zebrafish, Pig, Chicken, Goat, Dog, Guinea Pig, Horse, Sheep
Host	Rabbit
Clonality	Polyclonal
Calculated MW	61 KDa

Additional Information

Alias Symbol	B, Tyrp1
Format	Liquid. Purified antibody supplied in 1x PBS buffer with 0.09% (w/v) sodium azide and 2% sucrose.
Reconstitution & Storage	Add 50 ul of distilled water. Final anti-Tyrp1 antibody concentration is 1 mg/ml in PBS buffer with 2% sucrose. For longer periods of storage, store at 20°C. Avoid repeat freeze-thaw cycles.
Precautions	Tyrp1 antibody - C-terminal region is for research use only and not for use in diagnostic or therapeutic procedures.

Protein Information

Images



WB Suggested Anti-Tyrp1 Antibody Titration: 1.0 µg/ml
Positive Control: Rat Brain

Please note: All products are 'FOR RESEARCH USE ONLY. NOT FOR USE IN DIAGNOSTIC OR THERAPEUTIC PROCEDURES'.