

SLC20A1 antibody - C-terminal region

Rabbit Polyclonal Antibody

Catalog # AI12347

Product Information

Application	WB
Primary Accession	Q8WUM9
Other Accession	NM_005415 , NP_005406
Reactivity	Human, Rat, Rabbit, Pig, Dog, Horse, Bovine
Predicted	Human, Pig, Dog, Horse, Bovine
Host	Rabbit
Clonality	Polyclonal
Calculated MW	73700

Additional Information

Gene ID	6574
Alias Symbol	DKFZp686J2397, FLJ41426, GLVR1, Glvr-1, PIT1, PiT-1
Other Names	Sodium-dependent phosphate transporter 1, Gibbon ape leukemia virus receptor 1, GLVR-1, Leukemia virus receptor 1 homolog, Phosphate transporter 1, PiT-1, Solute carrier family 20 member 1, SLC20A1, GLVR1, PIT1
Format	Liquid. Purified antibody supplied in 1x PBS buffer with 0.09% (w/v) sodium azide and 2% sucrose.
Reconstitution & Storage	Add 50 ul of distilled water. Final anti-SLC20A1 antibody concentration is 1 mg/ml in PBS buffer with 2% sucrose. For longer periods of storage, store at 20°C. Avoid repeat freeze-thaw cycles.
Precautions	SLC20A1 antibody - C-terminal region is for research use only and not for use in diagnostic or therapeutic procedures.

Protein Information

Name	SLC20A1
Synonyms	GLVR1, PIT1
Function	Sodium-phosphate symporter which preferentially transports the monovalent form of phosphate with a stoichiometry of two sodium ions per phosphate ion (PubMed: 11009570 , PubMed: 16790504 , PubMed: 17494632 , PubMed: 19726692 , PubMed: 7929240 , PubMed: 8041748). May play a role in extracellular matrix and cartilage calcification as well as in vascular calcification (PubMed: 11009570). Essential for cell proliferation but this function is independent of its phosphate transporter activity

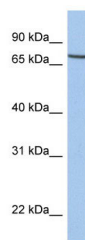
(PubMed:[19726692](#)).

Cellular Location	Cell membrane; Multi-pass membrane protein
Tissue Location	Ubiquitously expressed.

References

Walker, L.C., (er) Breast Cancer Res. Treat. (2007) In press Reconstitution and Storage: For short term use, store at 2-8°C up to 1 week. For long term storage, store at -20°C in small aliquots to prevent freeze-thaw cycles.

Images



WB Suggested Anti-SLC20A1 Antibody Titration: 0.2-1
µg/ml
Positive Control: MCF7 cell lysate

Please note: All products are 'FOR RESEARCH USE ONLY. NOT FOR USE IN DIAGNOSTIC OR THERAPEUTIC PROCEDURES'.