

PEMT antibody - C-terminal region

Rabbit Polyclonal Antibody
Catalog # AI12294

Product Information

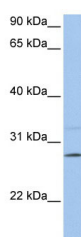
Application	WB
Primary Accession	Q9BW86
Other Accession	NM_148172 , NP_680477
Reactivity	Human, Mouse, Rat, Rabbit, Zebrafish, Pig, Dog, Guinea Pig, Horse, Bovine, Yeast
Predicted Host	Human, Mouse, Rat, Rabbit, Pig, Chicken, Dog, Guinea Pig, Horse, Bovine
Clonality	Rabbit
Calculated MW	26 kDa

Additional Information

Alias Symbol	MGC2483, PEAMT, PEMPT, PEMT2, PNMT
Format	Liquid. Purified antibody supplied in 1x PBS buffer with 0.09% (w/v) sodium azide and 2% sucrose.
Reconstitution & Storage	Add 50 ul of distilled water. Final anti-PEMT antibody concentration is 1 mg/ml in PBS buffer with 2% sucrose. For longer periods of storage, store at 20°C. Avoid repeat freeze-thaw cycles.
Precautions	PEMT antibody - C-terminal region is for research use only and not for use in diagnostic or therapeutic procedures.

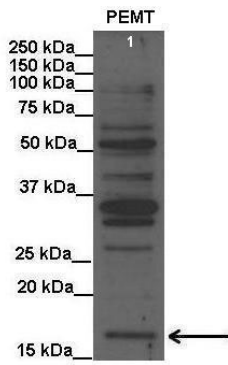
Protein Information

Images



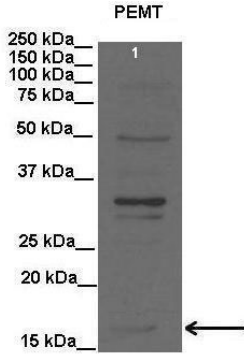
WB Suggested Anti-PEMT Antibody Titration: 0.2-1 µg/ml
Positive Control: 721_B cell lysate

Lanes: Lane1: 20 ug rat liver lysate
Primary Antibody Dilution: 1:1000



See Immunoblot 2 Data and Customer Feedback for more information

Secondary Antibody: Anti-rabbit HRP
Secondary Antibody Dilution: 1:15000
Gene Name: PEMT
Submitted by: Anonymous



See Immunoblot 3 Data and Customer Feedback for more information

Lanes: Lane1: 20 ug rat liver lysate
Primary Antibody Dilution: 1:2000
Secondary Antibody: Anti-rabbit HRP
Secondary Antibody Dilution: 1:15000
Gene Name: PEMT
Submitted by: Anonymous

Please note: All products are 'FOR RESEARCH USE ONLY. NOT FOR USE IN DIAGNOSTIC OR THERAPEUTIC PROCEDURES'.