

STEAP3 antibody - N-terminal region

Rabbit Polyclonal Antibody
Catalog # AI12290

Product Information

Application	WB
Primary Accession	Q658P3
Other Accession	NM_001008410 , NP_001008410
Reactivity	Human, Mouse, Rat, Rabbit, Pig, Dog, Guinea Pig, Horse, Bovine
Predicted	Human, Mouse, Rabbit, Dog, Guinea Pig, Horse, Bovine
Host	Rabbit
Clonality	Polyclonal
Calculated MW	54601

Additional Information

Gene ID	55240
Alias Symbol	STMP3, TSAP6, dudlin-2
Other Names	Metalloreductase STEAP3, 1.16.1.-, Dudulin-2, Six-transmembrane epithelial antigen of prostate 3, Tumor suppressor-activated pathway protein 6, hTSAP6, pHyde, hpHyde, STEAP3, TSAP6
Format	Liquid. Purified antibody supplied in 1x PBS buffer with 0.09% (w/v) sodium azide and 2% sucrose.
Reconstitution & Storage	Add 100 ul of distilled water. Final anti-STEAP3 antibody concentration is 1 mg/ml in PBS buffer with 2% sucrose. For longer periods of storage, store at 20°C. Avoid repeat freeze-thaw cycles.
Precautions	STEAP3 antibody - N-terminal region is for research use only and not for use in diagnostic or therapeutic procedures.

Protein Information

Name	STEAP3 (HGNC:24592)
Synonyms	TSAP6
Function	Integral membrane protein that functions as a NADPH-dependent ferric-chelate reductase, using NADPH from one side of the membrane to reduce a Fe(3+) chelate that is bound on the other side of the membrane (PubMed: 26205815). Mediates sequential transmembrane electron transfer from NADPH to FAD and onto heme, and finally to the Fe(3+) chelate (By similarity). Can also reduce Cu(2+) to Cu(1+) (By similarity). Mediates efficient transferrin-dependent iron uptake in erythroid cells (By similarity). May play a

role downstream of p53/TP53 to interface apoptosis and cell cycle progression (By similarity). Indirectly involved in exosome secretion by facilitating the secretion of proteins such as TCTP (PubMed:[15319436](#), PubMed:[16651434](#)).

Cellular Location

Endosome membrane {ECO:0000250 | UniProtKB:Q8CI59}; Multi-pass membrane protein. Note=Localizes to vesicular- like structures at the plasma membrane and around the nucleus

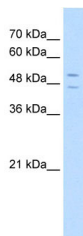
Tissue Location

Expressed in adult bone marrow, placenta, liver, skeletal muscle and pancreas. Down-regulated in hepatocellular carcinoma.

References

Amzallag, N., (2004) J. Biol. Chem. 279(44), 46104-46112 Reconstitution and Storage: For short term use, store at 2-8°C up to 1 week. For long term storage, store at -20°C in small aliquots to prevent freeze-thaw cycles.

Images



WB Suggested Anti-STEAP3 Antibody Titration: 5.0 µg/ml
Positive Control: HepG2 cell lysate

Please note: All products are 'FOR RESEARCH USE ONLY. NOT FOR USE IN DIAGNOSTIC OR THERAPEUTIC PROCEDURES'.