

Ube2g1 antibody - N-terminal region

Rabbit Polyclonal Antibody

Catalog # AI12205

Product Information

Application	WB
Primary Accession	P62254
Other Accession	NM_025985 , NP_080261
Reactivity	Human, Mouse, Rat, Rabbit, Zebrafish, Pig, Dog, Guinea Pig, Horse, Bovine, Yeast
Predicted Host	Mouse, Rat, Rabbit, Zebrafish, Pig, Chicken, Dog, Guinea Pig, Bovine
Clonality	Rabbit
Calculated MW	Polyclonal 19509

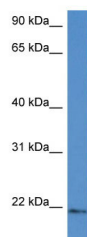
Additional Information

Gene ID	67128
Alias Symbol Other Names	2700059C12Rik, AI256795, AU014992, AW552068, D130023C12Rik Ubiquitin-conjugating enzyme E2 G1, 6.3.2.19, E217K, UBC7, Ubiquitin carrier protein G1, Ubiquitin-protein ligase G1, Ubiquitin-conjugating enzyme E2 G1, N-terminally processed, Ube2g1, Ube2g
Format	Liquid. Purified antibody supplied in 1x PBS buffer with 0.09% (w/v) sodium azide and 2% sucrose.
Reconstitution & Storage	Add 50 ul of distilled water. Final anti-Ube2g1 antibody concentration is 1 mg/ml in PBS buffer with 2% sucrose. For longer periods of storage, store at 20°C. Avoid repeat freeze-thaw cycles.
Precautions	Ube2g1 antibody - N-terminal region is for research use only and not for use in diagnostic or therapeutic procedures.

Protein Information

Name	Ube2g1
Synonyms	Ube2g
Function	Accepts ubiquitin from the E1 complex and catalyzes its covalent attachment to other proteins. In vitro catalyzes 'Lys-48', as well as 'Lys-63'-linked polyubiquitination. May be involved in degradation of muscle-specific proteins. Mediates polyubiquitination of CYP3A4.

Images



WB Suggested Anti-Ube2g1 Antibody Titration: 1.0 µg/ml
Positive Control: Mouse Spleen

Please note: All products are 'FOR RESEARCH USE ONLY. NOT FOR USE IN DIAGNOSTIC OR THERAPEUTIC PROCEDURES'.